

BRYNAWEL FUCHSIA & GARDEN CENTRE

**Our Garden Centre is open all year. 7 days a week. The Fuchsia house opens in March and closes in September. It is open the same hours as Brynawel.
Monday to Saturday 9am - 5.30pm Sunday 10am - 4pm**

Whilst great care is taken to ensure correct labelling we cannot give any guarantee regarding the naming of plants. To assist us it would be of great help if visitors to the Garden Centre did not remove labels from, or move plants from, the display benches except when selecting for purchase.

It is also regretted that once they have left our premises we cannot be responsible for the performance of the plants as there are so many factors over which we have no control. Such as under or overwatering, over feeding or lack of, temperature levels and so on. However, given responsible care we are sure that you will be pleased with the performance of our quality plants and please feel free to ask our advice if in any doubt.

We reserve the right to alter this catalogue or withdraw varieties without notice.

Please see the back pages for terms and conditions of our mail order service.

HOW TO FIND US

**A directional map is printed on the back cover.
Tourist Board signposted from Redlands Road, nr The Merrie Harrier Pub,
LLandough, Penarth.**

Why not visit our website at : www.brynawelgardencentre.co.uk

or

E-mail us at : fuchsias@brynawelgardencentre.co.uk

AN INTRODUCTION TO BRYNAWEL

Brynawel Nurseries was purchased by the Fisher family in 1975. The nursery was then a 5.5 acre site with a number of wooden glasshouses, totalling 0.5 of an acre, of various sizes and producing lettuce, tomatoes, cucumbers and bedding plants, mainly for wholesale outlets

A lot of changes have taken place over the years, one significant change was from a mainly wholesale outlet to one of 95% retail with overall production switching to ornamentals and increasing considerably - to such an extent that the growing areas have had to be extended.

A new Cambridge class 1 glasshouse was built to replace the old shop and two years later all the wooden houses were replaced plus a doubling of the shop sales area.

An additional 2.5 acres were purchased next to the existing site allowing a new entrance to be built with car parking for 100 vehicles.

During the above period the decision was taken to specialise in geraniums and fuchsias plus an extended range of bedding plants. This has led to Brynawel gaining a healthy reputation as growers of fine quality plants, resulting in visitors from a wide area.

Brynawel Garden Centre was one of the leaders in computerised systems in garden centres, having developed not only computerised tills but also bar coding for the shop and label printing for the nursery side of the business.

The last few years have seen further developments on the site. The first of these was an extra bay, added to the existing Cambridge glasshouse, this enables Pelargoniums to be grown in a self contained area away from the fuchsia production.

A new propagation unit, comprising 2 roller benches with hot water heating system, mist irrigation and thermal screening brings everything up to date and doubles our capacity for rooted cuttings e.t.c.

Our Fuchsia House has also increased in size and has over 700 varieties on display in various shapes and sizes, including mini, half, standard and super standard and 2 and 3ltr pots. Almost all now have colour photographs to illustrate them when not in flower and there are information boards telling you all you need to know about the plants and how to care for them.

Our latest project is to block pave our outdoor pot area to make it easier for us to display our heavier items in a more customer friendly way.

Brynawel is constantly changing and no matter how many time you visit you'll always find something different!!

Look out for the brown Tourist Board signs from Redlands Road in Penarth

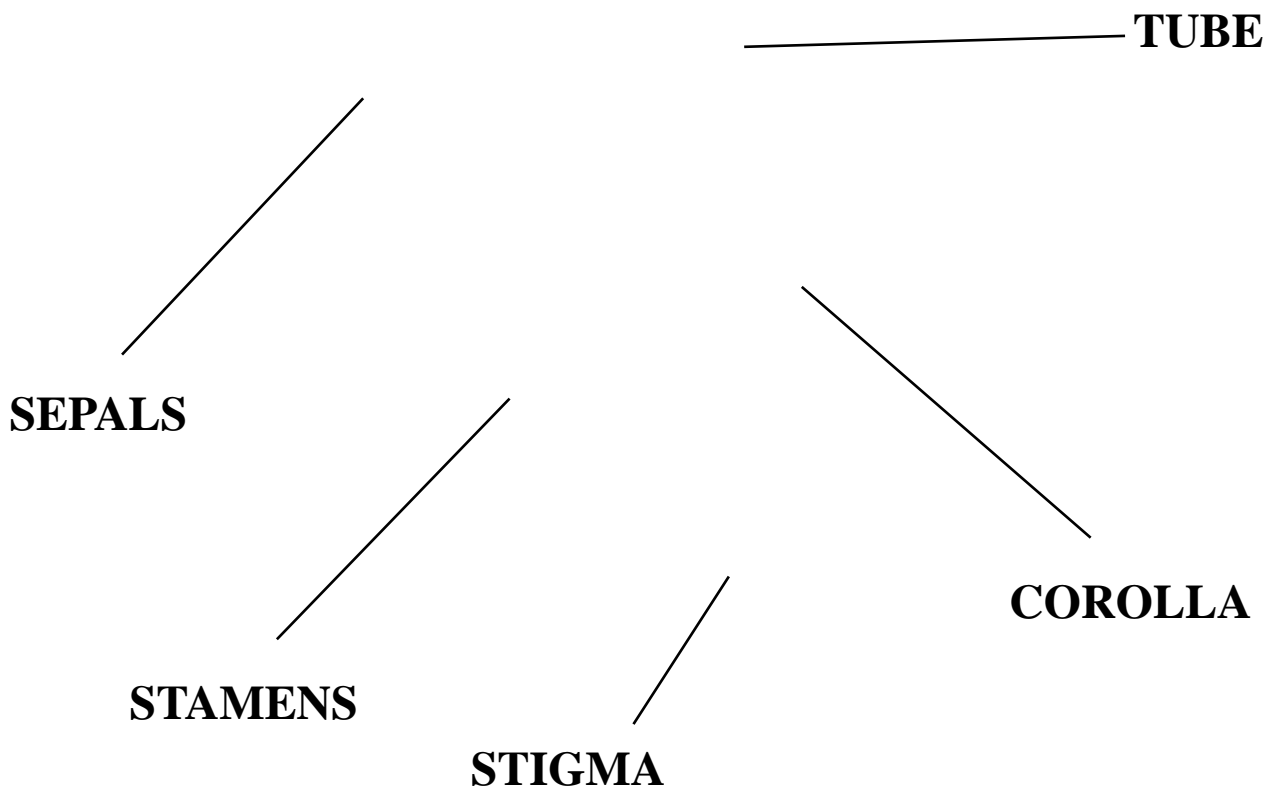
ABBREVIATIONS AND TERMS

We have tried to give as much information as possible in our description. The first colour mentioned is the SEPAL, and the second is the COROLLA. Following that the flowers, small, medium or large, then the growth habit Finally the raiser and date.

S	SINGLE - A single flower has a corolla made up of 4 petals
SD	SEMI DOUBLE - Usually contains 5-8 petals but is not considered to be a double
DBL	DOUBLE - Contains many layers of petals
PISTILLATE	Female part of flower only
PERFECT	Carries both male and female parts

THE FUCHSIA FLOWER

OVARY



NEW TO OUR CATALOGUE

NEW WORLD FUCHSIAS

THESE ARE LARGE DOUBLE FLOWERED VARIETIES. THEY ARE LAX IN GROWTH AND ARE SUITABLE FOR HANGING BASKETS. THEY ARE ONLY AVAILABLE FOR COLLECTION FROM MARCH ONWARDS. THEY ARE NOT AVAILABLE MAIL ORDER.

ALASKA DBL Very large flower of deep purple and white. Very lax growth

FLORIDA DBL Cerise red/lighter cerisevery large flowers.

GEORGIA DBL White/orangey pink. Very large flowers.

HAWAII DBL White cerise with light patches and streaks. Very large flowers.

LOUISIANA DBL White/lavender and white. Very large flowers.

MARYLAND DBL Red/purple. Very deep colours and large flowers.

MISSISSIPPI DBL White/very pale lilac. Very large flowers.

OKLAHOMA DBL Whire/cerise red. Very large flowers.

TENNESSEE DBL White/pink with white streaks. Very large flowers.

VIRGINIA DBL Pinkish white/white streaked red. Very large flowers.

GENERAL VARIETY LIST

ANNABELLE STUBBS DBL Coral pink/reddish purple. Full double trailer. Riley 1991

BALLERINA S Ivory pink/clear pink with rose edges. Profuse very vigorous. Niederholzer

CHARLIE DIMMOCK DBL Red/Purple. COLLECTION ONLY, NO MAIL ORDER

DU BARRY DBL Soft pink/purple marbled pink. Large flowers

EDEN ROCK DBL Reddish pink/white streaked red

FIRECRACKER Triphylla. Variegated pink,cream,green leaves NO MAIL ORDER

HOT COALS S Dark red/aubergine. Very strong colours

INDIANA

KOMEET S Red/purple changing to red lilac. Medium flowers. De Groot,1970

MAORI MAID DBL Red/purple. Large blooms, trailer. Tired 1966

MIRJANA S Crimson flushed rose/deep purple to violet.

MRS SUSAN BROOKFIELD DBL Red/Deep purple. strong upright growth

RINGWOOD MARKET SD Rose/powder blue. Very floriferous

ROSE FANTASIA S Pink/deep pink. Flowers carried erect

ROCKET FIRE DBL Dark rose/purple and dark pink. Upright bush. Garrett 1989

SCARCITY S Deep scarlet cerise/purple. Strong upright growth

SCHONE WILHEM S Pinky orange self. Short jointed stiff lax growth

SIR MATT BUSBY DBL Red/white. Naturel trailer. Medium sized flowers. Sinton 1998

STORMY SUNSET DBL Pale pink/violet and phlox pink. Stubbs 1976

THAT'S IT DBL Smokey red/orchid purple. Lax bush

TINTERN ABBEY S Light cerise/rosy lilac. Upright and bushy.

TRUMPETER Triphylla Deep carmine pink/carmine pink. Trailer

VICTORIANA DBL All pink flowers on an upright bushy plant

FUCHSIA LIST

IN OUR SHOP WE GROUP OUR FUCHSIAS INTO COLLECTIONS. WE HAVE DECIDED TO LAYOUT OUR CATALOGUE IN THE SAME WAY TO MAKE IT EASIER FOR WHEN YOU VISIT US.

FAMOUS TRAINS

Introduced by Gouldings Fuchsias of Bentley, Ipswich in 1985

BRIGHTON BELLE TRIPHYLLA Rosy pink/rosy salmon pink. Tall medium green foliage.

CONTINENTAL SD White/pink with rose margins. Medium flowers. Good for standard work.

EASTERLING S Ivory white/rosy red. Medium flowers. Upright growth.

FENMAN S Flesh pink/pink. Large flowers. Upright growth. Good for standard work. Easy to grow.

FLYING SCOTSMAN DBL Pale pink/red with white streaks. Large blooms. Upright bushy growth.

GOLDEN ARROW TRIPHYLLA Pale orange/deep orange. Arrow shaped buds. Dark foliage. Lax.

MANCUNIAN DBL White/white with pink veining. Medium blooms Trailer

ORIENT EXPRESS TRIPHYLLA Pale pink/rose pink. Tall grower. Medium green foliage.

SNOW WHITE AND 7 DWARES

BASHFUL DBL Deep pink/white veined red. Dwarf plant. Hardy. Tabraham 1974

DOC S Red/pale purple. Small flowers. Dwarf plant. Tabraham 1974

DOPEY DBL Red/purple. Small free flowers. Upright and bushy. Hardy. Tabraham 1974

GRUMPY S Deep pink/navy blue. Small flowers. Stiff upright. Dwarf. Hardy Tabraham 1974

HAPPY S Red/blue. Star shaped flowers. Pale flowers. Pale foliage. Dwarf. Hardy Tabraham 1974

SLEEPY S Pale pink/lavender blue fading to pink. Small flowers. Dwarf. Hardy. Tabraham 1954

SNEEZY S Red/deep blue purple. Small, free flowers. Upright and bushy. Dwarf. Hardy. Tabraham 1974

SNOW WHITE DBL White/white. Pink blush unless in shade. Trailer. Dunnett 1982

TRIPHYLLA

These differ from the usual fuchsias in that the leaves are in sets of three (tri) as opposed to two. They are not hardy and do need protection during the winter. The flower has a long tube and the corolla and sepals resemble a star. They are borne in terminal clusters.

They will stand more sun than other fuchsias and will make large bush plants.

ANDENKEN AN HEINRICH HENKEL Bright crimson. Dark reddish foliage. Lax growth.

CORALLE Orange red. Sage green foliage. Upright. Bonstedt 1905

FANFARE Light carmine/bright vermillion. Large flowers. Dark foliage.

GARTENMEISTER BONSTEDT Orange brick red self. Very free flowering. Bronze foliage.

GEORGE BORNEMANN Orange red. Strong grower. Bonstedt.

JACKQUELINE Blood red/mandarin red. Dark velvety foliage. Oxtoby 1987

LEN BIELBY Currant red/mandarin red. Will take full sun. Oxtoby

LEVERKUSEN Rosy cerise/rose cerise. Upright growth. Free flowering. Hartnauer 1923

LILO VOGT Pink/pink. Very free flowering. Trailer. Nutzinger 1976

MARY Vivid bright crimson. Sage green foliage. Difficult. Bonstedt 1897

BERGARTNER KOCH Bright orange. Olive green foliage. Upright. Sauer 1912

STELLA ANN Coral pink and orange. Dark olive green foliage. Dunnett 1914

THALIA Rich orange scarlet. Dark olive green foliage. Bonstedt 1905

VIRGINIA CURRYER Variegated form of Thalia

WHITEKNIGHTS CHEEKY Dark tyrian purple. Small flowers. Dark red foliage.

WHITE FUCHSIAS

THIS IS A VERY POPULAR COLLECTION AND HOLDS LOTS OF EXCELLENT VARIETIES. MOST WHITES HAVE A HINT OF PINK IN THEM AND THIS CHANGES DEPENDING ON THE CONDITIONS THAT THE PLANT IS GROWN IN.

- ALASKA** DBL Large fluffy white blooms. Slow growth. Schnabel 1963
- ALYCE LARSON** DBL White tipped pink/white. Good basket. Tired 1972
- ANN HOWARD TRIPP** S-SD White/white lightly veined pink. Pale foliage. Clark 1982
- ANNABEL** DBL White flushed pink/white veined pink. Good growth. Upright, will trail. Ryle 1977
- ATLANTIC STAR** S White striped pale pink/white striped pink. Medium flowers. Redfern 1986
- BIANCA** DBL White/white. Large flowers. Trailer. Pennisi 1967
- CERI** S White/white tinged pink. Upright. Bushy. Holmes 1980
- CHARISMA** S White veined pink/white. Profuse bloomer. McDonald 1989
- COTTON CANDY** DBL White/very pale pink. Large fluffy blooms. Upright. Tired 1962
- COUNTESS OF ABERDEEN** S White/pale pink. Small. Purest white in shade. Cocker 1988
- CRYSTAL STARS** SD White/white. Small, free flowers. Best in shade. Bushy. Clyne 1974
- EVENSONG** S Self white. Medium flowers. Upright growth. Colville
- EXTON BEAUTY** DBL White/white. Medium Upright.
- FLYING CLOUD** DBL White/white. Large and free. Needs shade for best colour. Reiter 1949
- FRANK UNSWORTH** DBL White/white pale pink flush. Light foliage. Lax growth. Clark 1982
- HAPPY WEDDING DAY** DBL White/white Medium foliage. Large flowers, Lax upright.
Richardson 1985
- HAWKSHEAD** S White/white. Small flowers and very small foliage. Hardy bush. Travis 1962
- ICEBERG** S White/white medium flowers. Best in shade. Medium to dark green foliage.
Mitchinson 1980
- IGLOO MAID** DBL White/white with touch of pink. Medium to large flowers. Yellowish foliage.
Holmes 1972
- RONALD L. LOCKERBIE** DBL Creamy white/cream maturing to white. Richardson 1986
- ROY WALKER** DBL White tinged pink/white. Large blooms. Upright and bushy.
Walker-Fuchsia La 1975
- SILVER DOLLAR** S White/white. Medium flowers. Upright and bushy. Mitchinson 1985
- SLEIGH BELLS** S All white. Bell shaped corolla. Upright and bushy. Grow cool. Schnabel 1954
- SNOWDON** DBL White/white. Gold foliage. Howarth 1988
- SNOWSTORM** SD White/white. Medium flowers. Upright bush or standard. Handley 1976
- TED HEATH** DBL Cream/soft cream. Clark
- THIS ENGLAND** DBL White/white tinged pink. Lax growth. Brackenbury 1982
- TING A LING** S White self. Large flowers. Needs shade. Upright ,bushy. Schnabel-Paskesen 1959
- WEIBKE BECKER** SD White self. Trailer. Dark foliage.
- WHIRLAWAY** SD White/white with pink tinge. Large and free flowers. Trailer. Waltz 1961
- WHITE GALORE** DBL White/white. Large flowers. Trailer. Fuchsia-La 1968
- WHITE JOY** S White/white pink flush. Medium flowers. Upright. Burns 1980
- WHITE KING** DBL White/white. Large flowers. Pennisi 1968
- WHITE SPIDER** S Baby pink/white veined pink. Good for standard work. Haag 1951
- WHITE WATER** SD White/white. Medium flowers. Lax upright. Lockerbie.

ORANGE FUCHSIAS

ANOTHER POPOULAR CATEGORY. THEY ARE NOT COMPLETELY ORANGE BUT THEY DO HAVE SOME FANTASTIC SALMON AND LIGHT ORANGE COLOURS. MOST HAVE DARK FOLIAGE AND TWO VARIETIES, LORD LONSDALE AND AURORA SUPERBA HAVE NATURALLY CRINKLED LEAVES.

- AURORA SUPERBA** S Light apricot/deep orange peach. Bushy. Good for standard work.
American
- CHANG** S Orange red/brilliant orange. Small. Upright. Hybrid. Hazard and Hazard 1946
- CLAIRE DE LUNE** S Salmon/salmon orange. Large flowers. Trailing. Rozain-Boucharlat. 1880
- COACHMAN** S Pale salmon/rich orange vermillion. Medium flowers. Lax bush. Bright 1910
- FIRE MOUNTAIN** DBL Orange pink/orange carmine. Large compact flowers. Filtered sun.
Stubbs 1980
- GROENE KAN'S GLORIE** S Orange salmon/light orange to deep orange. Large flowers.
Upright. Steevens 1978
- HINNERIKE** S Dark orange red/dark orange red. Glossy foliage. Upright. Will stand full sun.
Bogemann 1987
- LOS ANGELES** S Waxy coral apricot/deep orange. Large flowers. Upright.
- LORD LONSDALE** S Light apricot/orange peach. Lax but bushy growth. British
- MARY POPPINS** S Pale apricot/orange vermillion. Medium flowers. Need 1967
- NOVELLA** DBL Rosy pink/salmon orange. Large flowers. Trailer. Tirt 1968
- OCEAN BEACH** S Light salmon/salmon orange. Small flowers. Upright and bushy. Krogh 1975
- ORANGE CRYSTAL** S Orange/orange. Medium flowers. Upright and bushy. Will take full sun.
Handley 1980
- ORANGE DROPS** S Light orange/darker rich orange. Semi trailer. Shade. Martin 1963
- ORANGE FLARE** S Orange salmon/light orange shading to deep orange. Best in sun.
Medium flowers. Upright. Handley 1972
- ORANGEBLOSSOM** S Pale peach/vivid orange. Small flowers. Lax growth. Meier 1987
- ORANG-U-TAN** S Cream flushed light orange/orange. Tall upright. Will take full sun.
Adams 1982
- PRINCE OF ORANGE** S Salmon pink/deep salmon orange. Upright. Banks 1872
- PUSSY CAT** S Small orange pink flowers. Lax upright. Felix 1978
- RUDDIGOR** S Salmon orange/bright orange. Medium upright. Takes full sun. Goulding 1987
- SHANLEY** S Bright orange/deeper orange. Medium/large blooms. Upright and bushy.
Mrs Shutt 1968
- SWANLEY YELLOW** S Orange pink/rich orange vermillion. Medium. Bronze green foliage.
Upright and bushy. Cannell 1900
- TANGERINE** S Flesh pink/orange maturing to rose. Upright and bushy. Tirt 1949

VARIEGATED/COLOURED LEAF

THESE RANGE FROM YELLOW LEAVES TO CREAM AND GREEN , AND RED AND GREEN. THEY ARE SLOWER GROWING AND REQUIRE LESS WATER. MANY HAVE SINGLE FLOWERS AND ARE GROWN MAINLY FOR THEIR FLOIAGE COLOUR.

ANJO S Pink/white. Yellow and green foliage.

ARCADIA GOLD DBL Rich shiny red/milky white. Variegated foliage. Sport of Swingtime. Birch.

AUTUMNALE S Scarlet/purple. Leaves start green then yellow then dark red salmon,coppery tones

BERYLS JEWEL S Red/purple. Variegated foliage. Hardy. 1980's

CELEBRATION DBL Pale orange/orange. Will take sun. Lime and green foliage. Goulding 1988

CLOTH OF GOLD S Red/purple. Small, late flowers. Golden foliage. Bushy. Stafford 1863.

GOLDEN ANNIVERSARY DBL White/intense black purple, pink marks. Light green new foliage. Trailer. Stubbs 1980

GOLDEN BORDER QUEEN S Neyron rose/amethyst violet, flushed pale pink. Brilliant yellow foliage. Penhall 1979

GOLDEN LENA SD Pale flesh pink/rosy magenta flushed pink. Medium flowers. Variegated foliage. Trailer. Nottingham 1978

GOLDEN MARINKA Rich red/dark red. Variegated foliage, shades of green, yellow and red. Needs light. Weber 1955. Sport of Marinka.

GOLDEN SWINGTIME DBL Waxy red/white veined red. Very free. Identical to parent except yellowish foliage. Sport of Swingtime.

GOLDEN TREASURE S Scarlet/purplish magenta. Nice green and gold variegated foliage. Sparse flowers. Carter 1860

JANET WILLIAMS DBL Red/amethyst blue. Medium flowers. Deep gold and bronze foliage. Upright and strong. Tabraham 1976

OLD SOMERSET SEE TOM WEST

ROSECROFT BEAUTY SD Crimson/white veined cerise. Small flowers. Pale green foliage edged golden yellow. Sport of Snowcap. Eden 1968.

SHARPITOR S Variegated green and cream leaves. Very small flowers

STRAWBERRY DELIGHT DBL Waxy crimson/white flushed carmine rose. Medium to large flowers. Yellow and bronze foliage. Bushy. Gadsby 1969.

SUNRAY S Cerise/rosy purple. Foliage is light green edged creamy white. Needs full light. Upright and bushy.

TOM WEST S Carmine/purple. Small flowers. Green,cream and cerise foliage. Trailer. Needs light. Identical to Herbes de Jacques.

TROPIC SUNSET DBL Carmine/dark purple splashed pink. Small, free flowers. Foliage reddish bronze. Trailer. Antonelli 1965

VERSICOLOUR S Pink,white and green leaves. Very small red and purple flowers

SPECIES AND SPECIES HYBRIDS

MOSTLY NATIVE TO CENTRAL & SOUTH AMERICA (ALTHOUGH NOT EXCLUSIVELY) THEY ARE WOODY PLANTS RANGING FROM LARGE TREES TO SMALL CREEPING PLANTS. MOST ARE VIGOROUS SHRUBS AND MANY ARE HARDY IN THIS COUNTRY. THE MOST OBVIOUS EXAMPLE BEING F.MAGELLANICA RICARTONII.

- ALPESTRIS** *F.REGIA* VAR Small purple flowers, soft downy foliage
- ARBORESCENS** *SCHUFIA* Huge leaves, small flowers. Rosy purple/pale mauve. Flowers resemble a lilac spray. 9ft to 25ft tree. Good for cool conservatory.
- ARIEL** *F x BACILLARIS HYBRID* Magenta/deep magenta pink. Tiny flowers and foliage. Lax upright. Travis 1973
- BACILLARIS** *ENCLIANDRA* Pink to red/pink to red. Tiny flowers and tiny foliage.
- BOLIVIANA** *FUCHSIA* Red/red. Large foliage medium to dark green with red veins. Grows to 12ft. Good for cool conservatory.
- BOLIVIANA ALBA** *FUCHSIA* Species variant. Identical to BOLIVIANA except for lack of red pigmentation
- COCCINEA** *QUELUSIA* Violet purple/red. Probably from Brazil. Shrub 3ft tall.
- DOMINYANA** *HYBRID* Scarlet/vermillion. Upright and bushy. Dominy 1852
- DENTICULATA** *FUCHSIA* Pink to light red/orange scarlet. Grows as upright shrub to 13ft. Will tolerate slightly lower winter temperatures than some.
- FULGENS** *ELLOBIUM* Pale red/bright red. Large foliage pale green. Can grow to 10ft tall. Not hardy.
- HEMSLEYANA** *ENCLIANDRA* Purplish rose self. Tiny flowers and tiny foliage. Upright shrub. Probably hardy in most areas. Woodson & Siebert 1937
- HIGHLAND PIPES** *HYBRID* Beetroot purple/ruby red. Dark green foliage. Lax growth. Heat tolerant if shaded. De Graaf 1985
- LOTTIE HOBBY** *HYBRID F x BACILLARIS* Crimson/dark crimson. Tiny flowers with tiny foliage. Upright and bushy. Edwards 1839
- LOXENSIS** *FUCHSIA* Light scarlet/dull scarlet. Upright and bushy. Needs warmth.
- NEOPOLITAN** *ENCLIANDRA* Mini flowers. White, red and pink flowers on the same plant. Fern like foliage. Clark 1984
- OOSJE** *HYBRID F x BACILLARIS* Red/red with tinge of white. Medium green foliage. Very tiny foliage and flowers. Van de Grijp 1973
- PANICULATA** *SCHUFIA* Rosy purple/lavender. Smaller flowers than ARBORESCENS. 9ft to 25ft in height. Warm sunny position in the greenhouse.
- PROCUMBENS** *SKINNERA* Greenish yellow tube/green tipped purple. No corolla. Long, thin prostrate growth.
- PUTMAYENSIS** *FUCHSIA* Orange to coral red/orange red. Medium green foliage. Grow as shrub 3ft to 10ft. Do not overwater.
- SCHONBRUNNER SCHULJUBIAUM** *HYBRID TRIPHYLLA TYPE* Rosy red/orange red. Dark green foliage. Upright growth. Nutzinger 1976
- SERRATIFOLIA** *SYNONYMOUS WITH F. DENTICULATA*
- SIMPLICAULIS** *FUCHSIA* Light reddish pink/bright red. 6ft to 16ft. Tall upright growth. Good as greenhouse or conservatory climber.
- SPACE SHUTTLE** *HYBRID* Rhodonite red/Light orange. Flowers all year round. Lax upright or stiff trailer. De Graaff 1985
- TARRA VALLEY** *HYBRID* Light olive green/dark purple. Small flowers. Upright. 1987
- THYMIFOLIA** *ENCLIANDRA* White to pink/white to pink. Larger foliage than others in this section but still tiny flowers.
- VERSICOLOUR** *F.MAGELLANICA* Red/purple. Silvery variegated foliage with red flush. Will grow up to 4ft. Is hardy.
- WHITE CLOVE** *HYBRID F.x BACILLARIS*. Purplish ageing to mauve/mauvish pink. Very tiny flowers and foliage. Bushy growth. Very rapid growth.

HARDY FUCHSIAS

ALL OF THE VARIETIES LISTED BELOW CAN BE LEFT OUT IN THE GARDEN ALL YEAR ROUND. PLANT OUT AT THE END OF MAY. PLANT SLIGHTLY DEEPER THAN THEY ARE IN THE POT AND PROTECT DURING THEIR FIRST WINTER

- A.M. LARWICK** S Rich carmine/purplish mauve. Medium flowers. Upright. L.A. Smith 1940
- ABBE FARGES** SD Light cerise/rosy lilac. Small flowers. Upright. 18in. Lemoine 1901
- ACHIEVEMENT** S Reddish cerise/reddish purple. Medium. Upright and bushy. 2ft Melville 1886
- ADMIRATION** S Cardinal red/ruby red. Medium. Upright bush. 15-18in. Wood 1940
- ALICE HOFFMAN** SD Rose/white veined rose. Compact and bushy. Small Bronze foliage. 18in. Klese 1911
- ARMY NURSE** SD Deep carmine/bluish violet veined pink. Medium Upright and bushy. 3-4ft. Hodges 1947.
- BARBARA** S Pale pink/cherry and tangerine pink. Pale foliage. Upright. Tolley 1971
- BEACON** S Deep pink/bright mauvish pink. Medium Early flowering. Dark foliage. Compact upright. 2ft. Bull 1871
- BEACON ROSA** S Red/pink lightly veined red. Medium. Upright and bushy. 18in. Sport from Beacon. Burgi-Ott 1972
- BLUE BUSH** S Rosy red/blue bird blue. Medium. Upright and bushy. Mid green foliage. 3-4ft Gadsby 1973
- BLUE GOWN** DBL Cerise/bluish purple splashed pink and carmine. Large. Upright. 30in. Milne.
- BLUE LACE** DBL Red/blue. Large blooms. Dark foliage. Upright and strong. 2ft Tabraham 1974
- BOUQUET** DBL Red/violet ageing to reddish purple. Small . Good in the rockery. 12-15in. Lemoine 1893
- BRILLIANT** S Scarlet/violet magenta. Medium. Upright and bushy. Needs early pinching. 30in. Bull 1865
- BRUTUS** S Rich cerise/rich dark purple. Medium. Early. Mid green foliage. Upright and bushy. 2ft. Good hedging. Bull 1901.
- C.J. HOWLETT** S Reddish pink/bluish carmine veined carmine. Small. Upright and bushy. 15in. Howlett 1911
- CALEDONIA** S Cerise/crimson. Medium. Spreading habit. 2ft. Lemoine 1899
- CARDINAL FARGES** SD Pale cerise/white,veined cerise. Small . Upright and bushy. 15in Rawlins 1958.
- CHARMING** S Reddish cerise/rosy purple. Medium. Yellowish foliage. Upright and bushy. 30in. Lye 1877
- CHILLERTON BEAUTY** S Pale rose pink/mauvish violet veined pink. Small flowers. Upright and bushy. 3ft. Bass 1847
- CHINA LANTERN** S White/rosy pink. Medium flowers. Mid green foliage. Upright. 15in. 1953
- CLIFTON CHARM** S Bright cerise/deep lilac rose. Medium. Early flowering. Mid green foliage. Upright. 18in. Hadley 1981
- CONNIE** DBL Cerise/white veined cerise. Large flowers. Light foliage. Upright. 30in. Dawson 1961
- CONSPICUA** S Bright scarlet/white veined scarlet. Small. Upright and bushy. 2ft. Smith 1863
- CONSTANCE** DBL Soft pink/bluish mauve. Medium. Upright and bushy. 18in Berkeley Hort. Nursery. 1935
- CORAL ROSE** DBL Coral pink/rose pink. Small. Olive green foliage. Good for rockeries. 6-9in. Tabraham 1982
- CORALLINA** S Scarlet/rich purple. Medium flowers. Dark foliage. Lax growth. 3ft. Pince 1884

DAVID S Cerise-red/rich purple. Small. Mid green foliage. 15-18in. Wood 1937

DISPLAY S Rose pink/deeper pink. Early flowers. 18in. Smith 1881

DOLLAR PRINCESS DBL Cerise/rich purple. Small to medium. Dark foliage. 18in Lemoine 1912

DR FOSTER S Scarlet/violet purple. Large flowers. Mid green foliage. Upright. 3ft. Lemoine 1899

DRAME SD Scarlet/violet purple. Medium. Yellowish foliage. Upright. 2ft. Lemoine 1880

EDITH SD Red/lavender. Medium. Sport from Margaret. 3-4ft. Brown 1980

EL CID S Deep red/burgundy red. Medium. Upright. 18in. Colville 1966

ELF S Red/cherry red. Small. Miniature growth. Upright. Tabraham 1976

EMPRESS OF PRUSSIA S Glowing scarlet/reddish magenta. Large. Upright 3ft Hoppe 1868

ENFANT PRODIGUE SD Crimson/bluish purple. Medium. Upright and bushy. 3ft. Lemoine 1887

FLASH S Light magenta/light magenta red. Small. Light to mid green leaves. Upright. 30in.
Hazard and Hazard 1930

FORGET ME NOT S Pale pink/light blue. Mid foliage. Upright. 12-15in. Banks 1861

FRED'S FIRST DBL Deep purplish pink/vivid purple veined rose. Medium. Mid green leaves. 18in
Woolly 1978

GARDEN NEWS DBL Pink/magenta rose. Large. Mid green foliage. Upright. 2ft. Handley 1978

GENERAL MONK DBL Cerise rose/blue to mauve blue. Medium. Dark foliage. 18in. 1844.

GENII S Cerise/rich violet with pink. Small. Yellowish foliage. Upright. 24in. Reiter 1951

GERALD DREWITT S Pale pink/grey-blue, rose. Small. Mid green foliage. 18in. Weeks 1984

GLOW S Red/burgundy. Medium. Mid green foliage. 2ft. Wood 1946

GOLDSWORTH BEAUTY S Pale cerise/reddish purple. Medium. Upright. 18in Slocock 1952

GRAAF WITTE S Carmine/purple. Small. Yellowish foliage. Medium bush. 3ft. Lemoine 1899

GRAYRIGG S Blush pink/palest blue veined pink. Medium. Light to mid green foliage. Upright.
2ft. Thornley 1971

H.G. BROWN S Deep scarlet/dark lake. Medium. Dark foliage. Low bush. 12-15in. Wood 1946

HEIDI ANN DBL Crimson/bright lilac veined cerise. Medium. Dark foliage. Upright. 15-18in.
Smith 1969

HERALD S Scarlet/deep purple. Medium. Mid green foliage. Upright. 2ft. Sandkey 1887

HERITAGE SD Scarlet/rich purple. Medium to large. Slow. 15-18in. Lemoine 1902

HOWLETTS HARDY S Scarlet/violet purple. Large. Medium bush. 18in. Howlett 1952

ISIS S Crimson/crimson. Small. Dark green leaves. Upright. 2ft. Lemoine 1880

JAMES TRAVIS DBL Bright cardinal red/vivid purple veined . Medium. Mid green foliage.
Upright. 18in Thorne 1960

JANIE DBL White/lavender blue. Bushy.

JOAN COOPER S Pale rose opal/cherry red. Small. Light green foliage. Bushy. 18in. Wood 1964

LADY BOOTHBY S Crimson/blackish purple. Medium. Dark green foliage. Upright. 3ft. Raffill

LADY THUMB SD Reddish light carmine/white veined carmine. Small. Small foliage. Upright. 18in.
Roe 1966

LENA SD Pale flesh pink/rose magenta. Medium. Mid to light green foliage. 18in. Bunney 1862

LIEBRIEZ SD Pale cerise/pinkish white veined pink. Small. Small foliage. Upright. 12in.
Kohene 1974

MARGARET SD Carmine scarlet/violet veined cerise. Medium. Upright. 4ft. Wood 1937

MARGARITE DAWSON DBL White blushed pink/white with pink veining. Large.
Mid green foliage. 18in. Dawson 1984

MARGARET ROE S Rosy red/pale violet purple. Medium. Bushy. 15in. Gadsby 1968

MERLIN S Bright red/deep purple flushed pink. Upright. Adams 1982

MISCHIEF S Light pink/Mauve matures to deep pink. Upright. Dwarf. Tabraham 1985

MME. CORNELLISEN SD Rich scarlet/white veined cerise. Small. Strong growth. Cornellisen.1860

MONUMENT DBL Carmine/purple. Story 1865

MR. W. RUNDLE S Pale rose/orange vermillion. Medium. Upright. Rundle 1896

MRS. J.D. FREDERICKS S Salmon pink/darker pink. Medium. Upright. Evans and Reeves. 1936

MRS POPPLE S Scarlet/purple violet. Medium. Upright and bushy. Elliott 1899

NAVY BLUE S Deep pink/navy blue. Medium. Pale green foliage. Upright. 2ft. Tabraham 1974

NICOLA JANE DBL Cerise pink/bluish pink. Medium. Upright and bushy. 18in Dawson 1959

PAPOOSE SD Bright red/very dark purple. Small. Low bush. Good basket. Reedstrom 1960

PEE WEE ROSE S/SD Rosy red/rose pink,edged red. Small. Mid green foliage. Lax bush. 2ft.
Niederholzer 1939

PEGGY KING S Rosy red/peony purple. Small. Mid green foliage. Upright. 30in. Wood 1954

PHYLLIS SD Waxy rose/rosy cerise. Small. Yellowish foliage. Upright and bushy. 2ft. Brown 1938

PHYRNE DBL Rich cerise/white veined cerise. Large. Dark foliage. Upright and bushy. 30in.
Lemoine 1905

PINK GOON DBL Red/appleblossom pink,veined deep pink. Large. Mid green. Upright. 2ft.
Hobson 1982

PIXIE S Pale cerise/rosy mauve,veined carmine. Medium. Yellowish foliage. Upright. 3ft Russell 1960

POWDER PUFF DBL Red/white. Small. Upright and bushy. Miniature. Tabraham 1976

PRES. E.A. ELLIOTT S Waxy red/reddish purple. Large. Mid green foliage. Upright. 2ft
Thorne 1962

PRESTON GUILD S Pure white/violet blue. Small. Light to mid green foliage. Upright. 18in-2ft.
Thornley 1971

PROSPERITY DBL Waxy crimson/pale neyron rose. Medium. Dark glossy foliage. Upright. 2ft
Gadsby 1970

QUERY S White edged rose/mauvis violet. Small. Mid to pale green Upright. 2ft. Bass 1848

READING SHOW DBL Red/deep blue. Medium. Mid to dark green foliage. Upright. 15-18in.
Wilson 1967

RED IMP DBL Red/dark purple/wine red. Medium. Dark purple green foliage.Upright. 15-18in.
Tabraham 1985

RICCARTONII *F.MAGELLANICA* S Scarlet/dark purple. Small. Good hedge. 4ft plus.
Young 1830

ROSE OF CASTILE S Waxy white/purple faintly flushed rose. Small. Mid green foliage. Upright.
18in. Banks 1855

ROYAL PURPLE SD Deep cerise/rich purple. Large. Upright. 18in. Lemoine 1896

RUFUS S Bright turkey red self. Medium. Upright and strong. 18in. Nelson 1952

SANTA CLAUS DBL Bright red/white veined red. Small blooms.

SANTA CRUZ SD Deep crimson/dark crimson. Large. Upright and bushy. 2ft. Tired 1947

SCHNEEWITCHER S Rich waxy red/rich violet blue. Medium. Upright and bushy. 18in
Hoech 1884

SEALAND PRINCE S Light red/violet purple. Medium. Mid green foliage. Upright. 30in.
Walker Bees 1967

SNOWCAP SD Bright red/white veined cerise. Small. Mid green foliage. Upright. 2ft.
Henderson 1880

SON OF THUMB S Cerise/lilac. Small. Bushy. 15in. Gubler 1978

SUSAN TRAVIS S Deep pink/rose pink. Medium. Spreading bush. 2ft. Travis 1958
TEMPTATION S White/white, orange rose throat. Upright. 1959
TENNESSEE WALTZ SD Rose madder/lilac rose. Medium. Upright and strong 2ft.
Walker and Jones 1951
THE TARN S Pale pink/violet blue. Medium. Dark foliage. Upright. 2ft. Travis 1962
THORNLEY'S HARDY S Waxy white/red. Small .Lax bush/trailer. 12in. Thornley 1970
TINKER BELL S Red/white. Small. Dark foliage. Upright.9-12in high. Tabraham 1976
TOM THUMB S Carmine/mauve Very small. Mid green foliage. Upright. 15in Baudinat 1850
TRASE SD Carmine-cerise/white veined. Medium. Upright. 18in. Dawson 1959
TRUDY S White/violet blue rose veining. Small. Mid green foliage. 18in. Gadsby 1969
WHITE PIXIE S Reddish carmine/white veined pink. Small. Yellowish foliage Upright. 3ft.
Merrist Wood 1968

WHITEKNIGHTS PEARL S Pale pink/clear pink. Small Dark green foliage.Upright 3ftWright 1980
WOODSIDE DBL Rosy red/mid lilac. Large. Dark green foliage. Upright. 2ft. Wood 1954

BASKET FUCHSIAS

THESE FUCHSIAS ARE LAX, BUSH OR TRAILING IN HABIT. IDEAL FOR BASKETS, WALL BASKETS AND HANGING POTS. MANY OF THE VARIETIES CAN ALSO BE GROWN IN POTS IF PINCHED REGULARLY. IT IS BEST TO TREAT THEM AS NON HARDY PLANTS AND PROTECT IN THE WINTER.

AMELIA AUBIN S Waxy white/Rosy cerise. Eggbrecht 1884
ANGEL'S DREAM DBL Clear soft pink/white with pink marks. Large. Stubbs 1973
ANGEL'S FLIGHT DBL Deep pink/white. Large. Martin 1957
ANNA OF LONGLEAT SD Shell pink/bright lavender to pale lavender. Small. Robertson 1985
APPLAUSE DBL Carmine/orange red. Very large. Mid green foliage. Best in shade.
ART DECO DBL Aubergine red/white. Medium.
ATOMIC GLOW DBL Pale orange/glowing pink with orange tint. Machado 1963
AUDREY HEPBURN S Carmine/white. Medium. Mid green foliage. Jonker 1987
AUNTIE JINKS S White,cerise at edge/purple. Small. Compact growth. Wilson 1970
BABY CHANG S Orange red/brilliant orange. Almost miniature. Hazard and Hazard 1950
BASKETFUL DBL Pink/white and pink. Medium. 1970's
BELSAY BEAUTY SD Rhodamine pink/violet fading to cyclamen purple. Medium. Ryle 1975
BETH ROBLEY DBL Salmon/salmon orange. Dark foliage. Tired 1971
BICENTENNIAL DBL Indian orange/magenta , indian orange. Medium. Standard.Paskesen 1976
BITS DBL White/violet blue to violet purple. Medium. Wilkins/Higginbottom 1986
BITTERSWEET DBL Pale pink/rose salmon marks. Mid green foliage.
BLUE BUTTERFLY SD White/deep violet blue splashed white. Medium to large. Waltz 1960
BLUE VEIL DBL White/lobelia blue. Large. Pacey 1980
BON BON DBL Pale pink/very pale pink. Medium. Almost white in shade. Kennett 1963
BOW BELLS S-SD White/magenta. Large. Light foliage. Handley
CASCADE S White veined carmine/deep carmine. Medium. Cascading habit. Lagen 1937
CATHIE MCDOUGALL DBL Cerise/violet blue marbled blue and pink. Thorne 1960
COME DANCING DBL Deep pink/magenta rose. Large. Handley
CORSAGE DBL Ivory pink to pale salmon/orange coral. Stubbs 1979
CRACKERJACK S-SD White/pale blue to pale mauve. Large. Fuchsia-La 1961
CREAM PUFF DBL Pale pink/creamy white. Large. Kennett 1960

CROSSCHECK S Neyron rose/tyrian purple. Medium. Brouwer 1985

CRUSADER DBL Frosty white/deep purple. Large. Tired 1967

CUPCAKE S Pink/pale magenta. Large. Light green foliage. Stubbs 1986

CURLY Q S Pale carmine/violet purple. Sepals curl. Grey foliage. Kennett 1961

CURTAIN CALL DBL Pinkish carmine/deep rose bengal. Large. 1961

DAISY BELL S Pale orange/vermillion. Small. Light foliage.

DANCING FLAME DBL Orange/orange carmine. Medium. Stubbs

DANISH PASTRY S Coral/lavender. Small. Mid green foliage. Fuchsia Forest. 1968

DEEP PURPLE DBL White/dark purple. Strong grower. Garrett 1989

DELTA'S BAMBI S Deep purple/robin red. Very small flowers and foliage. 1991

DEVONSHIRE DUMPLING DBL White/white. Round buds. Light foliage. Hilton 1981

DIE FLEDERMAUS DBL Scarlet/violet blue. Blackwell 1967

DUSKY ROSE DBL Deep coral pink/rose, coral pink shades. Waltz 1960

ED LAGARDE DBL White/deep blue. Large flowers. Mid green foliage. Pennisi 1967

ELIZABETH DBL Rosy pink/pastel pink. Dark foliage. Tired 1970

ENCHANTED DBL Rosy red/campanula blue Large. Tired 1951

EVA BOERG S-SD Pinkish white/pinkish purple. Medium. Very popular. Yorke 1943

EXPO '86 DBL White/red and orange. Medium. Wood 1986

FEY DBL Creamy white/porcelain blue. Large, free flowers. Lockerbie 1970's

FORT BRAGG DBL Rose/pale lavender. Large. Waltz 1957

FROSTED FLAME S White flushed pink/bright flame. Large. Mid green foliage. Handley 1975

GAY FANDANGO DBL Carmine/rose. Large. Good for standards. Nelson 1951

GIANT PINK ENCHANTED DBL Rose/white suffused pink. Large.

GILDA DBL Coral/overlaid rose red. Yellowish foliage. Handley 1971

HARRY GRAY DBL White/white shading to rose pink. Small to medium flowers. Dunnett 1981

HAUTE CUISINE DBL Reddish purple/dark reddish purple. Mid green foliage. De Graaff 1989

HAWAIIAN NIGHT DBL Waxy white/orchid mauve. Very large flowers. Fuchsia-La 1968

HUMBOLDT'S HOLIDAY DBL Pinkish white/violet splashed pink. Large. Yellow foliage.
Hassett 1980

IAN LEEDHAM SD Crimson/tyrian purple. Large blooms. Mid green foliage. Bielby 1983

ICHIBAN DBL White to pink/spinel pink fading to cyclamen purple. Large. Fuchsia-La 1973

INDIAN MAID DBL Scarlet red/rich royal purple. Large blooms. Waltz 1962

JACK SHAHAN S Pale rose bengal/rose bengal. Large flowers. Good standard. Tired 1948

JESS S Deep rose/vivid cerise. Bright colours. Meier 1987

KEGWORTH CARNIVAL DBL White/tyrian purple to rose bengal. Medium flowers
Smith 1978

KLEIN BEEKESTEIN DBL Light rose/deeper rose. Very large flowers. Serrated foliage.

KON TIKI DBL Pure white/pink violet. Dark greyish foliage. Medium flowers.

LA CAMPANELLA SD White/imperial purple. Small, free flowers. Very popular
Blackwell 1968

LADY BETH DBL Pale rose/bright violet blue. Large flowers. Martin 1958

LADY IN GREY DBL White/greyish blue. Large blooms. Lockerbie 1960's

LANCASHIRE LASS S White/hyacinth blue, paler at base. Medium flowers. Strong grower.
Sinton 1986

LILLIBET DBL White/soft rose. Very large flowers. Mid green foliage. Hodges 1954

LISA DBL Bright rose/rich lavender fading to orchid. Large blooms. Antonelli 1965

LISI S White/pale lilac. Medium flowers.

LITTLE CUTIE S Pink/purple with light reddish purple at base. Small flowers. Light foliage.
Palko 1976

LONELY BALLERINA DBL Dark carmine/white veined and splashed carmine. Medium blooms.
Serrated foliage. Blackwell 1962

LONG WINGS S Rose madder/pale violet veined rose. Large and long flowers. Serrated foliage.
Caunt 1985

MACHU PICCHU S Empire rose/scarlet. Small to medium. Light foliage. Full sun. de Graaff 1985

MAGIC FLUTE S White/clear coral rose. Medium. Light foliage. Handley 1975

MAMA BLEUSS DBL Pink/pale blue streaked deep blue. Large flowers. Turet 1959

MANCUNIAN DBL White/white with pink veining. Medium. Light foliage. Goulding 1985

MANDARIN SD Pale salmon pink/glowing orange carmine. Large. Dark foliage. Schnabel 1963

MARINKA S Rich red/slightly darker red. Dark reddish foliage. Good standard. Rozain-Boucharlat 1902

MASQUERADE DBL Flesh pink/medium purple. Large blooms. Kennett

MERRY MARY DBL Pink/white veined and splashed pink. Large and free. Fuchsia Forest 1965

MOOD INDIGO DBL Pale yellowish green/purple with pink base. Very lax growth. De Graaff 1988

MOONLIGHT SONATA S Bright pink/light purple flushed and veined rose. Medium.
Dark foliage. Blackwell 1963

MOTH BLUE DBL Red/deep lilac blue. Large flowers. Turet 1949

MRS. W. RUNDLE S Flesh pink/rich orange vermilion. Large. Good standard. Rundle 1883

NORA HENDERSON S Pale pink/white veined pink. Light foliage. Hall 1984

PANTALOONS SD Light red/plum burgundy. Medium. Dark foliage. Fuchsia Forest 1966

PINCH ME DBL Frosty white/bishops purple. Large. Serrated foliage. Turet 1969

PINK FLAMINGO SD Dark pink/pale pink. Long flowers.. Dark foliage. Fuchsia Forest-Castro 1961

PINK GALORE DBL Deep candy pink/soft rose candy pink. Dark foliage. Fuchsia La 1958

PINK LA CAMPANELLA S Pale carmine/magenta maturing to carmine. Small. Hanson 1988

PINK MARSHMALLOW DBL Pale pink/white blushed and veined pink. Large.
Yellowish foliage. Stubbs 1971

PINK RAIN S Neyron rose/mallow purple. Small. Dark foliage. De Graaff 1987

PRES. MARGARET SLATER S White flushed salmon pink/mauve pink. Medium. Taylor 1972

PRINCE OF PEACE DBL Frosty rose/magenta. Large. Davis 1970

PRINCESS PAT SD White/imperial purple. Variegated leaves. 1980

PRINCESSITA S White/deep rose. Medium. Small foliage. Niederholzer.

PUTS FOLLY S Creamy white/lilac rose paler at base. Light foliage. Baker 1971

QUASAR DBL White/dauphins violet. Large. Best in shade. Walker 1974

R.A.F. DBL Bright red/rose pink splashed and veined cerise. Large. Garson 1942

RAMBLING ROSE DBL Soft rose self. Large. Mid green foliage. Turet 1959

RED SPIDER S Deep crimson/deep rose madder veined and margined crimson. Dark foliage.
Reiter 1946

ROMANCE DBL White/blue violet with pale pink. Large. Serrated foliage. Paskesen 1967

ROSE OF DENMARK S Pale blush pink/rose pink edged deep pink. Bushy. Banks.

ROUGH SILK S Pale carmine pink/crimson red. Large.

S'WONDERFUL DBL Pink/pale lavender and orchid pink. Medium. Fuchsia Forest-Castro 1961

SALLY ANN DBL White/shades of rose. Large blooms. Pennisi 1971

SALMON GLOW S Salmon/salmon orange. Medium. Light foliage. Very lax

SATELLITE S White/dark red fading to bright red. White streaks on each petal. Light foliage.
Kennett 1965

SEA SHELLS DBL Whitish pink/pink veined deep pink. Large. Bushy. Evans 1954

SEVENTH HEAVEN DBL White shading to pink/orange red. Large. Best in filtered sun.
Stubbs 1981

SIERRA BLUE DBL White/silvery blue. Large. Waltz 1957

SILVER ANNIVERSARY DBL White/silvery blue. Medium. Stubbs 1985

SMOKEY MOUNTAIN DBL Whitish pink/smokey purple. Large flowers. Wood 1987

SOPHISTICATED LADY DBL Pale pink/white. Large, fluffy blooms. Martin 1964

SQUADRON LEADER DBL White/white with pink blushes. Self branching. Goulding 1986

STANLEY CASH DBL White/deep royal purple. Serrated foliage. Very popular. Pennisi 1970

SWEET SIXTEEN DBL Neyron rose/rich pink. Large. Yellowish foliage. Walker and Jones 1951

SWEETHEART DBL Pink/lavender blue, outer petals fuchsia pink. Medium to large.
Walker and Jones 1951

SWINGTIME DBL Shiny red/milky white. Large. Dark foliage. Very popular. Turet 1950

T'EINDE DBL Deep pink/shell pink. Very long tube. Unusual. Moerman 1991

TAFFETTA BOW DBL Carmine rose/purple violet. Very lax growth. Stubbs

TEXAS LONGHORN SD Bright red/pure white veined red. Very long flowers. Fuchsia La 1960

TRAILING QUEEN S Red/dull red. Very lax growth. Bronze foliage. Kohene

TROPICANA DBL Pale salmon pink/orange. Light foliage. Turet 1964

TUONELLA DBL Bright blue/powder blue with touch of pink. Blackwell 1970

TWO TIERS DBL Azalea pink/pale beetroot purple. Large two tier blooms. Dark foliage. Porter 1985

VANESSA JACKSON S Salmon orange/orange red. Large flowers. Handley 1980

VIVA IRELAND S Pale pink/soft lilac lavender. Very good cultivar. Medium flowers. Ireland 1956

VOGUE DBL Ivory white/campanula violet fading to bishops violet. Fuchsia La 1959

WESTMINSTER CHIMES SD Rose fading to pale pink/violet blue ageing to magenta. Small.
Lax growth. Clyne 1976

WILD AND BEAUTIFUL DBL Dark neyron rose/dark amethyst violet. Light foliage.
Soo Yun Field

WILDFIRE SD Bright rose/salmon red to cardinal red. Will take full sun. Handley 1972

WILSON'S PEARLS SD Red/white veined pink. Flared blooms. Mid to dark foliage. Wilson 1967

WINE AND ROSES DBL Rose/rose opening to deep wine. Large. Dark foliage. Walker 1969

WINGS OF SONG DBL Bright rose pink/lavender pink. Late to flower. Self branching.
Blackwell 1968

ZULU KING S Deep carmine/blackish purple. Dark foliage. Small. De Graaff 1990

POT/ BUSH FUCHSIAS

THESE VARIETIES CAN BE PLANTED IN POTS ON THE PATIO OR PLANTED DIRECTLY INTO THE GARDEN. THEY ARE NOT HARDY AND WILL NEED TO BE BROUGHT IN FOR THE WINTER. THE LIST INCLUDES DOUBLE AND SINGLE VARIETIES AND ALSO THOSE THAT ARE NEW TO OUR CATALOGUE

- /
- AINTREE** S White suffused rose/ vivid rose madder. Upright. Dark foliage. 1964
- AIRBALL** S Magenta/magenta. Light foliage. Upright. Small. Hobbs 1984
- AIREDALE** S Crimson flushed pink/reddish pink. Small. Upright.
- ALAN AYCKBOURNE** S Baby pink/white. Bell shaped. Prolific. Lax upright. Clark 1985
- ALF THORNLEY** DBL Neyron rose/creamy white. Upright and bushy. Good show plant. Clark 1981
- ALISON EWART** S Light carmine/mauve flushed pink. Small flowers. Dark foliage.
Bushy. Roe 1977
- ALISON REYNOLDS** DBL Rose bengal/violet. Best in shade. Reynolds 1982
- ALWIN** SD Neyron rose/white veined red. Medium. Upright and bushy. Good bush. Clyne 1976
- AMANDA BRIDGLAND** DBL White/deep blue streaked pink. Small upright. Bridgland 1985
- AMANDA JONES** S White and soft pink/soft mauve pink. Small. Upright and bushy. Roe 1981
- AMAZING MARY** SD Light red/dark red. Dark foliage. Tall and upright. Wright 1980
- AMBASSADOR** S Rose madder/violet purple. Large free flowers. Upright, bushy. Machado 1962
- AMY LYE** S White/coral orange. Lax bush. Lye 1885
- AMERICAN FLAMING GLORY** DBL Pink/purple to flame red edged pink and orange.
Lax upright. Large flowers. Martin 1962
- AMIGO** S White/orange and crimson. Large flowers. Upright and bushy.
- ANDRE LE NOSTRE** DBL Cerise/violet purple. Large blooms and free. Upright and bushy.
Lemoine 1909
- ANDREW HADFIELD** S Carmine/orchid blue with pink veins. Upright bloom. Medium foliage.
Upright and bushy. Rowell 1987
- ANDREW RYLE** S Crimson/white with crimson vein. Small, free. Best in sun. Ryle 1975
- ANDROMEDA** S Light red/lilac with red veins. Small. Upright and bushy. De Groot.
- ANGELA** DBL Pink/pale pink. Nice colouring. Large. Lax growth. 1970's
- ANGELA LESLIE** DBL Pink/deep pink spotted rose. Heavy blooms. Upright and bushy. Tired 1959
- ANGELA RIPPON** S Waxy china rose/wisteria blue. Medium. Upright bushy. Dark foliage. Gadsby 1977
- ANGELA'S LILAC** DBL Mid pink/mid lilac. Medium flowers. Upright and bushy. Hobson 1985
- ANITA** S White/cerise. Dark foliage. Upright and strong.
- ANNIE EARL** S Waxy cream/carmine scarlet. Upright bush. Lye 1887
- APACHE** DBL Rosy red/lilac oversplashed with pink. Medium, free flowers. Upright and bushy.
Hobson 1973
- APHRODITE** DBL Pink/pure white. Large flowers. Upright. Good for standards. Colville 1964
- ARC EN CIEL** S Deep cerise/metallic blue. Medium upright. Rozain 1892
- ARCADIA LADY** S Pale pink/bright magenta. Medium. Erect flowers. Pale lime green foliage.
Upright. Webb 1988
- ARELS AVENDZON** DBL Pink/deep reddish purple. Large. Upright growth
- ARLENDON** SD Bright red/white veined cerise. Green-Horce 1974/75
- ATLANTIS** SD White/lilac deeper at edges. Good standard. Dark foliage. Lax bush. Handley 1974
- AUSTRALIA FAIR** DBL Bright red/white veined red. Large flowers. Upright, bushy. Rawlins 1954
- AVOCET** S Crimson/white with red veins. Dark green foliage. Good for standards. Travis 1958

AXEL OF DENMARK S Triphyllaa type. Deep red/reddish orange. Denmark 1980

BABY GIRL S White/blue. Small flowers. Upright and bushy. Light foliage. Fleming 1995

BABY PINK DBL Light pink/light pink veined dark pink. Dark foliage. Soo Yun 1976

BALCON QUEEN S-SD Cerise/lilac. Bushy. Introduced by Underhill Nurseries.

BALLET GIRL DBL Bright cerise/white veined cerise. Upright. Dark foliage. Good standard.
Veitch 1894

BAMBINI S Rich crimson/mallow purple. Very small. Light foliage very compact and bushy. Pacey

BARBARA WINDSOR S Bright pink/violet pink. Very vigorous. 1998

BARON DE KETTELLER DBL Rich crimson/purple. Very large flowers. Bushy upright Lemoine 1901

BAROQUE PEARL DBL Light neyron rose/dark amethyst violet. Small. Upright. Cool conditions.
De Graaf 1985

BEALINGS DBL Waxy white/very deep purple. Medium blooms. Tall Goulding 1983

BEAUTY OF EXETER SD Light rosy salmon/deep rosy salmon. Large flowers. Lax bush.
Letheren 1890

BELLA MADINA S Rose cerise/rose cerise orange. Yellowish foliage. Weeks 1986

BELLA ROSELLA DBL Pink/mauve. Large flowers. Mid green foliage. Garrett 1989

BEN DE JONG S Triphylla type. Green/bright orange. Van den Burgh 1994

BERMUDA DBL Red/dark purple with red flecks. Large flowers. Upright. Lockerbie 1960's

BERNADETTE DBL Pale rose/veronica blue. Dark green foliage. Upright and bushy.
Schnabel 1950

BILLY GREEN S Salmon pink/salmon pink. Olive green foliage. Very tall and upright.

BISHOP'S BELLS SD Rosy red/bishops violet fading reddish purple. Large. Upright. Gadsby 1970

BLACK PRINCE S Red/very deep purple. Small flowers. Bushy growth.
SYN GRUSS AU DEM BODETHAL. Banks 1861

BLANCHE REGINA DBL White/amethyst violet. Medium flowers. Clyne 1974

BLANDS NEW STRIPED S Cerise/rich purple, pink stripes down each petal.
Medium to large flowers. Upright. Bland 1872

BLAZE AWAY DBL Vermillion rose/red with orange splashes. Lax growth

BLUE MIRAGE DBL White/aster violet. Large flowers. Bushy. Bellamy 1984

BLUE PEARL DBL Pink/violet blue. Lax bush. Martin 1955

BLUE SAILS S Neyron rose/dark violet blue fading to fuchsia purple. Large flowers. Pacey 1982

BLUE TIT S Red/violet veined red. Upright. Hobson 1982

BLUE WAVES DBL Neyron rose/deep campanula violet. Large and free. Bushy. Waltz 1954

BLUSH O' DAWN DBL Waxy white/grey and lavender blue. Large blooms. Needs shade. Small
standard. Martin 1962

BLYTHE SD Rose pink/lavender blue fading to lilac. Goulding 1988

BOBBY DAZZLER DBL Claret rose/indian lake, rose blotch. Medium flowers Early Tall Bielby 1987

BOBBY SHAFTOE SD Frosty white/frosty white flushed pale pink. Medium. Upright and self
branching. Atkinson 1973

BOBBY WINGROVE S Red/turkey red. Small flowers. Bushy and upright. Wingrove 1966

BOBOLINK DBL Flesh pink/blue violet. Large flowers. Bushy. Evans and Reeves 1953

BON ACCORDE DBL White/pale purple. Free small flowers held erect. Bushy. Needs frequent
pinching. Crousse 1861

BORDER QUEEN S Rhodamine pink/amethyst violet. Bell shaped flowers. Upright and bushy.
Ryle-Atkinson 1974

BOUFFANT S Red/white, veined rosy red. Large blooms and free. Tirt 1949

BOUNTIFUL DBL Palest pink/milky white pink veining. Free flowering. Bushy. Munkner 1963

BOUVIGNE 91 DBL Red tipped green/lilac edged purple. edium. Upright growth

BOY MARC S Triphylla type. All orange. Compact lax growth. Stannard 1995

BREEDER'S DREAM DBL White/phlox purple. Large flowers and free. Upright and bushy Jones 1961

BRENDA DBL White/shades of pink. Medium to large. Dark foliage. Upright and bushy. Ryle 1980

BRENDA WHITE S Carmine/bright white veined carmine. Small. Compact and bushy. Pacey 1986

BRIDAL VEIL DBL White/creamy white. Large. Small foliage. Lax growth. Waltz 1963

BRIDESMAID DBL White/pale lilac orchid. Medium. Upright. Tirt 1952

BRITISH JUBILEE DBL Salmon pink/salmon orange and claret red. Large. Good standard.
Bielby and Oxtoby 1988

BRITISH STERLING SD White/lavender rose shading. Upright and bushy. Foster 1973

BRIXHAM ORPHEUS S Venetian pink/blood red, lighter flecks. Medium. Upright. Holmes 1987

BROOKWOOD JOY DBL White/hyacinth blue marbled pink. Gilbert 1983

BUGLE BOY S Triphylla type. Dark rose/Small orange. Jones 1991

BUNNY SD Cerise/lilac pink edged darker. Upright and bushy. Need 1965

BUTTERCUP S Pale pink/orange. Medium. Upright. Good standard. Paskesen 1976

CAESER DBL Red/purple fading to burgundy. Rose shaped flowers. Large. Lax bush.
Fuchsia Forest 1967

CAMBRIDGE LOUIE S Pinky orange/rosy pink darker edges. Medium. Upright and bushy.
Napthen 1977

CAMELOT S White/white. Medium bell shaped flowers. Best in shade. Good standard.

CANDLELIGHT DBL Pure white/rose fading to bright carmine. Large. Waltz 1959

CAPRI DBL White/deep blue violet. Very large. Not easy. Lax upright. Schnabel-Paskesen 1960

CARLA JOHNSTONE S White/sea lavender violet. Medium. Good for standards. Pacey.

CARLISLE BELLS S White/bishops violet shading to pale pink. Good standard. Mitchinson 1983

CARMEL BLUE S White/blue. Medium flowers. Long blooms. Upright growth. Hodges 1956

CARMEN MARIA S Pink/baby pink deep pink veins. Medium. Upright growth. Breitner 1970

CARNOUSTIE DBL White, light pink/lavender to rose. Medium bell shaped flowers.
Good standard. Goulding 1986

CAROL ROE S Light pink/rosy pink. Medium. Short, compact growth. Roe 1976

CAROLINE S Cream flushed pink/campanula violet. Bushy growth. Miller 1967

CASPER HAUSER SD Red/blackish red. Light foliage. Lax growth. Bushy. Springer 1987

CECILE DBL Deep rose pink/lavender blue. Best in shade. Large flowers. Whitfield 1981

CELADORE DBL Candy pink/candy pink. Medium. Good weeping standard. Hall 1981

CELIA SMEDLEY S Neyron rose/currant red. Free flowering. Strong growth. Popular. Roe 1970

CHANDLERII S Creamy white/orange scarlet. Medium. Good for standards. Chandler 1839

CHARLIE GARDINER S Salmon pink/rose apricot. Medium to large flowers. Bell shaped.
Will take full sun. Goulding 1982

CHARLIE GIRL DBL Rose pink/lilac blue, pale at base. Upright. Tanfield 1970

CHECKERBOARD S Starts red then changes to white/red. Medium flowers freely produced.
Upright and strong. Walker and Jones. 1948

CHEERS DBL Coral pink/orange red. Lax upright. Stubbs 1979

CHESSBOARD S White/magenta edged crimson. Medium to large flowers. Upright strong grower.
Colville 1975

CHINA DOLL DBL Cerise red/white veined pink. Walker and Jones 1950

CHRISTMAS HOLLY DBL Bright red/deep purple streaked crimson. Foliage has serrated edges.

CHURCHTOWN SD Rhodamine pink/roseine purple edged deep purple. Medium, free flowers.
Upright. Porter 1984

CIRCUS S Pinkish coral/coral pink to magenta orange. Upright. Forest 1967

CITATION S Light rose pink/white veined pink. Large. Saucer shaped flowers. Hodges 1953

CITY OF ADELAIDE DBL White/violet maturing to magenta. Large . Upright. Richardson 1986

CITY OF LECEISTER S Rose bengal/pale violet purple. Medium flowers. Bushy. Pacey 1984

CLIANTHA DBL Pinkish green/magenta. Medium. Dark foliage. Upright. Strumper 1989

CLIFFS OWN S Waxy white/hyacinth blue. Small to medium dark foliage. Upright. Gadsby 1977

CLIFFS UNIQUE DBL Waxy white/gentian blue. Medium flowers. Early cool conditions. Bushy.
Gadsby 1976

CLOVERDALE JEWEL SD Neyron rose/wisteria blue. Medium flowers. Bushy. Gadsby 1974

CLOVERDALE PEARL S Rhodamine pink/white. Self branching upright. Gadsby 1974

CLOVERDALE STAR S White/wisteria blue. Upright. Gadsby 1976

COFID DBL White/smokey rose with orange. Lax bush.

COLLINGWOOD DBL Pure white/pale pink. Large blooms. Niederholzer 1945

COMET DBL Red/purplish blue. Large flowers. Upright. Tired 1963

CONFECTION DBL White to bluish purple/white. Large flowers. Stubbs 1982

CONISTON WATER S Soft rose/deep lavender blue. Upright. Travis 1959

COQUET DALE DBL Neyron rose/lilac. Medium flowers. Good standard. Ryle 1976

COTTA BRIGHT STAR

CORSAIR DBL White/sky blue with white marks. Lax growth. Kennett 1965

COUNTRY GIRL S Flesh pink/pink bengal. Medium flowers. Good for standards. Tolley.

COURT JESTER DBL Rosy red/royal purple. Large, free flowers. Easy to grow.
Fuchsia Forest, Castro 1960

COVER GIRL SD Bright red/rich blue white at base. Very popular. Haag and Son 1953

CRINOLINE DBL Rosy white/clear pale rose. Upright. Reiter 1950

CROSBY SOROPTOMIST S Rhodamine pink/clear white. Medium flowers. Dark foliage.
Upright. Clark

CUPID S Light scarlet cerise/bluish magenta. Small. Low growing bush.

CYMRU DBL Ivory/shell pink. Large flowers. Bushy growth. Thornley 1966

DAINTY LADY SD Cerise/white. Medium flowers. Bushy growth. Lowe 1878

DALTON S Flesh pink/venetian pink. Free flowering. Upright. Good for standards. Thornley 1971

DANNY BOY DBL Pale red/red. Large flowers. Upright growth. Tired 1961

DARK EYES DBL Deep red/violet blue. Lax growth. Medium flowers. Erickson.

DARK SECRET DBL Waxy white/deep violet. Medium flowers. Hodges 1957

DAY STAR S Pale rose to opal/magenta rose. Upright growth. Baker 1970

DEE COPLEY DBL Bright red/deep purple marked red. Large free flowers. Copley Gardens 1964

DELTAS DELIGHT S Rose red/violet. Upright growth. Medium flowers.

DELTAS DREAM S White/white with purple rose edges. Upright growth.

DELTAS FLAME DBL Carmine/robin red. Medium flowers. Upright growth.

DELTAS KO DBL Cream flushed rosy purple/deep purple. Upright growth. Large flowers.

DELTAS PARADE DBL Deep rosy red/deep purple. Upright.

DELTAS SONG S White/chinese rose. Medium flowers. Upright growth.

DELTAS SPRINKLER S Spirea red/robin red. Medium upright. Medium flowers.

DIAMOND WEDDING S Glossy red/reddish purple. Small upright. Good standard Holmes 1989

DIMPLES DBL Red/white with light red veining. Best colour in shade. Storvick 1981

DOMACIN DBL Neyron rose/lilac purple splashed rose. Medium flowers. Upright. Richardson 1985

DOREEN REDFERN S White/methyl violet. Small upright. Good for standards. Redfern 1984

DR TOPINARD S Rose/white veined rose. Medium upright and bushy. Lemoine 1890

EAST ANGLIAN S-SD Pink streaked carmine/rose flushed orange. Large free flowers. Lax upright.
Thorne 1960

EASTER BONNET DBL Deep pink to pale pink/dusky rose pink. Large flowers. Waltz 1955

EDEN LADY S Rose to white/hyacinth blue. Medium flowers. Best colour in shade.
Upright and bushy. Ryle 1975

EDEN PRINCESS S Reddish pink/rich mallow purple. Medium to large flowers.
Good for standards. Yellowish foliage. Mitchinson 1984

EILEEN SAUNDERS S Crimson/fuchsia purple. Bell shaped. Upright and bushy. Holmes 1974

EL CAMINO DBL Rosy red/white veined rose. Large flowers. Dark foliage. Upright and bushy.
Lee 1955

ELEANOR CLARK S Phlox pink/shell pink. Medium free flowers. Best in shade. Clark 1980

ELEANOR LEYTHAM S White/pink edged deeper pink. Small upright and bushy. Roe 1973

ELFRIEDE OTT S Triphylla. Salmon pink/deep salmon pink. Lax upright. Nutzinger 1976

ELIZABETH TRAVIS DBL Pale pink/white. Large free flowers. Upright and bushy. Travis 1956

ELSIE MITCHELL DBL Pink/sea lavender. Upright and bushy. Best in shade. Ryle 1980

EMILE DE WILDMAN DBL Waxy white/blush pink veined rose pink and cerise. Upright.
Good for standard. SYN FASCINATION. Lemoine 1905

EMILY AUSTEN S Light pink/rose. Show plant. Small flowers. Light green foliage. Upright.
Bielby/Oxtoby 1990

ENGLISH ROSE DBL White/imperial purple. Large flowers. Upright and bushy. Pacey 1987

ESTELLE MARIE S White/blue violet. Upright and strong. Newton 1973

ETERNAL FLAME SD Dark salmon pink/smokey rose. Upright and bushy. Dark foliage.
Paskesen 1941

EUSEBIA DBL White/red. Self branching. Good for standards. Stubbs 1982

EXCALIBUR S Pink/baby pink. Small flowers. Mid to dark foliage. Small upright. Goulding 1983

f. REGIA S Deep red/purplish. Semi climbing shrub. Vandelli 1825

FAIRY BELL DBL Candy pink/white. Medium flowers. Upright growth. Bush or standard.
Will take full sun. Howarth 1983

FALLING STARS S Pale scarlet/turkey red. Lax upright. Needs early pinching. Good show plant.
Good for standards. Reiter 1941

FANCY FREE DBL Pink/lilac to pink. Medium.

FANCY SOCKEYE DBL Salmon red/dark pink to salmon pink. Brough 1986

FASCINATION **SEE EMILE DE WILDMAN**

FIERY SPIDER S Pale salmon/crimson orange flush. Early and free. Cascading trailer.
Early pinching required. Munkner 1960

FIONA S White/blue paling to reddish purple. Lax upright. Clark 1958

FIREFLUSH S Rosy red/orangy apricot. Medium free flowers. Upright. Waltz 1943

FIRELITE DBL White/brilliant glowing red. Fluffy and flaring flowers. Light foliage. Waltz 1965

FIRST LADY DBL Deep pink to coral/deep clear pink. Large blooms. Stubbs 1973

FLAREPATH S Deep pink/rose madder. Medium flowers. Upright and bushy. Hobson 1976

FLIRTATION WALTZ DBL Creamy white/shell pink. Free flowering. Bushy growth.
Good show plant. Standard. Waltz 1962

FLORIDA DBL Deep pinkish red/deep pink with darker shades. Large. Strong upright.

FLUFFY FRILLS DBL Claret rose/amaranth pink. Large flowers. Frequent pinching. Stubbs 1976

FLY BY NIGHT DBL Cherry/fuchsia purple edged deep royal purple. Large and free.
Upright and bushy. Crockett 1965

FLYAWAY DBL White/spectrum violet with rose flush. Large and free. Upright and bushy.
Crockett 1965

FOUNTAINS ABBEY DBL Pinkish white/lavender blue flushed pink. Medium. Lax . Akers 1981

FOXGROVE WOOD S Pink/lavender. Small flowers. Strong upright.

FOXTROT SD Pale cerise/pale lavender pink at base. Upright and bushy. Tolley 1974

FRED STANDEN S Red/purple pink at base. Medium upright. Holmes 1990

FRIENDLY FIRE DBL Rose madder/white streaked and flushed rose madder.
Upright and good as standards. Caunt 1985

GARDEN WEEK DBL White/beetroot purple, splashed red. Large flowers. Lax. Richardson 1985

GAY ANNE SD Claret rose/mallow pink. Lax growth. Gadsby 1973

GAY PARASOL DBL Ivory/dark red fading to burgundy. Stubbs 1979

GEMMA S Pinkish white/deep violet blue. Small. Strong upright. Fleming 1996

GLADIATOR DBL Red/white. Large flowers. Upright growth. Lemoine 1889

GLENBY DBL Rose madder/amethyst violet fading to petunia purple. Self branching. Brazier 1972

GLENDALE S Coral pink self. Small bell shaped flowers. Tall, vigorous. Evans and Reeves 1936

GLITTERS S Waxy white/glowing orange red. Medium flowers. Upright and strong. Erickson 1963

GOLDEN DAWN S Light salmon/light orange shaded to fuchsia pink. Needs early pinching.
Haag 1951

GOLONDRINA S Rose madder/magenta streaked light pink. Large free flowers. Lax bush.
Niederholzer 1941

GRACE DARLING S Pale pink/white. Medium blooms. Bell shaped flowers. Upright and bushy.
Gadsby 1972

GRAND PRIX DBL Porcelain white/delft rose. Medium blooms. Fuchsia La 1972

GRANDMA SINTON DBL White/soft shell pink. Medium flowers. Show variety. Sinton 1986

GRASMERE S Coral red/deep coral pink. Self branching bush. Travis 1964

GREENPEACE S Light absinth green/ivory white. Hairy large leaves. Strong upright.
Unusual flower. De Graaff 1985

GREG WALKER DBL Carmine rose/bishops violet splashed carmine rose. Medium. Lax bush.
Richardson 1982

GRETNA CHASE S Pale neyron rose/white. Best in shade. Mitchinson 1988

GUY DAUPHINE DBL Carmine/plum purple. Large and free flowers. Upright and bushy.
Rozain-Boucharlet 1913

GYPSY GIRL DBL Cherry red/pale phlox purple. Compact bush. Pacey 1980

HALSALL BEAUTY DBL Pale pink/light purple splashed pink. Medium.Lax. Sinton 1990

HALSALL PRIDE DBL Red/white veined red. Large. Strong upright.

HAPSBURGH S White flushed pink/pale parma violet. Medium flowers. Upright and bushy.
Rozain-Boucharlat 1911

HARLOW CARR S Empire rose/white. Medium flowers. Lax upright. Johns 1988

HARRIET DBL White/blue. Large flowers. Lax growth. Soo Yun 1971

HATHERSAGE DBL Neyron rose/roseine purple shading to amaranth rose. Medium blooms.
Upright and bushy. Gadsby 1975

HAWAII DBL White/deep cerise. Large. Strong upright.

HAZEL DBL Neyron rose/violet and neyron rose. Lax upright, Large blooms. Richardson 1985

HEIDI WEISS DBL Crimson cerise/white veined scarlet. Sport of Heidi Ann. 1973

HERMIENA S White/violet purple. Upright. Mid green foliage. Lavieren 1987

HESSETT FESTIVAL DBL White/lavender blue with white flashes. Large flowers. Lax upright.
Goulding 1985

HIDCOTE BEAUTY S Waxy cream/pale salmon pink. Medium flowers. Upright, bushy. Webb 1949

HIDDEN BEAUTY Sorry no description as yet

HINDU BELLE S White tipped green/rich plum. Upright. Munkner 1959

HOLLYS BEAUTY DBL White tinged pale rose/pale purple. Medium green foliage. Garrett 1989

HONEYMOON SD Red/veronica blue. Upright slow grower. Yellowish foliage. Niederholzer 1943

HORATIO S Pale pink/deeper pink. Medium. Lax growth. Green 1975

HULA GIRL DBL Deep rose pink/white shaded pink. Large flowers. Lax growth. Paskesen 1972

ICE CREAM SODA SD White/white to pink. Large frilly blooms. Dark foliage. Lax growth.
Castro 1972

ICECAP S-SD Cardinal red/white with red veins. Bell shaped flowers. Upright ,bushy. Gadsby 1968

ICED CHAMPAGNE S Dawn pink/rhodamine pink. Long medium flowers. Short jointed growth.
Jennings 1968

IMPUDENCE S Light red/white veined rose. Medium saucer shaped flowers.
Upright, strong and bushy.

IMPULSE DBL White/Pale lilac. Medium flowers. Medium green foliage. Upright. Saxondale 1988

IRENE VAN ZOEREN DBL Light rose red/lilac rose/reddish purple border. Upright. Beije 1989

ISLE OF MULL S Baby pink veined flesh pink/rose magenta. Medium blooms. Upright and bushy.
Tolley 1978

ISLE OF PURBRECK S Pink/rose. Strong upright.

IXION S Pink/violet. Large. Medium green foliage. Lax growth

JAMBOREE DBL Salmon pink/carmine and salmon pink. Large blooms. Large glossy foliage.
Upright and bushy. Reiter 1955

JANE HUMBER DBL Venetian pink/rose purple. Large blooms. Lax upright. Bielby 1983

JENNY SORENSEN S Neyron rose/pale lilac with dark purple edges. Glossy green foliage.Upright.
Wilkinson 1987

JEZEBEL SD Cherry red/peony pink streaked cherry red. Medium upright. Walker 1979

JOAN BARNES DBL Light pink/crimson. Small upright. Barnes 1988

JOAN GOY S White/Lilac pink. Bell shaped. Erect blooms. Webb 1989

JOAN LEACH S Deep pink/light blue flushed pink. Small flowers. Upright, bushy. Tabraham 1975

JOAN PACEY S Pink/phlox pink veined rose pink. Will take full sun. Bushy. Gadsby 1972

JOHN GROOMS DBL Pink/blue to purple. Medium flowers. Bushy upright growth. Sinton 1996

JOY PATMORE S Waxy white/rich carmine. Medium flowers. Upright and bushy. Turner 1961

JUDITH MITCHELL DBL Pink/deep violet with rose streaks. Medium flowers. Upright growth.
Mid green foliage.

KATRINA DBL Very pale pink/pale pink. Large blooms. Bushy. Holmes.

KERNAN ROBSON DBL Pale red/smokey red. Large free blooms. Upright. Tired 1958

KINGS RANSOM DBL Clear white/imperial purple. Medium flowers. Upright and bushy.
Schnabel 1954

KISS N TELL S Waxy white/lavender flushed pink. Strong upright. Hooper 1992

KNOCKOUT DBL Coral to salmon pink/deep magenta purple with orange marks. Large. Red veined foliage. Lax growth. Stubbs 1981

KOCARD S Orange pink flowers. Upright growth. Dark foliage. De Groot. 1981

KON-TIKI DBL Pure white/pink-violet. Medium blooms. Lax bush. Tiret 1965

KWINTET S Rose pink/rosy red. Medium blooms. Upright and bushy. Van Wieringen 1970

LA FIESTA DBL White/light dianthus purple. Large and free. Lax growth. Kennett 1962

LADDIE DBL Light carmine/light purple. Best in shade. Large foliage. Wright 1980

LADY DOROTHY S Bright vermilion self. Dark foliage. Upright. Robinson 1980

LADY IN PINK SD Deep pink tube/white/candy pink. Medium. Small upright.

LADY ISOBEL BARNETT S Rosy red/rose purple. Very upright. Gadsby 1968

LADY KATHLEEN SPENCE S Whitish rose/lavender fading to light lilac. Best in shade. Upright and bushy. Ryle 1974

LAURA S Light orange/reddish orange. Medium flowers. Upright strong grower.

LECHLADE CHINAMAN S Purple/dark purple. Small flowers. Needs frequent pinching. Wright 1983

LECHLADE FIRE EATER S Triphylla. Crimson/brilliant orange. Lax upright. Dark olive foliage. Wright 1984

LECHLADE GORGON S Rosy purple/pale mauve. Flowers similar to sprays of lilac. Wright 1985

LECHLADE MAGICIAN S Purplish carmine/dark purple. Medium flowers. Rampant growth. Wright 1986

LEONORA S Soft pink self. Medium flowers. Bell shaped. Growth upright. Tiret 1960

LETTY LYE S Flesh pink/carmine crimson. Upright. Lye 1877

LILAC DAINTY DBL Dull red/lilac. Small flowers but free. Upright medium. Good for standards. Hobson 1982

LILAC PRINCESS S White/deep lilac to purple. Handley 1979

LILLYDALE DBL Rhodamine pink/purple violet flushed rhodamine pink. Large blooms. Good for standards. Lax upright. Richardson 1985

LINDISFARNE SD Pale pink/rich dark purple. Upright. Ryle-Atkinson 1974

LITTLE BEAUTY S Flesh pink/lavender blue. Small flower. Best in shade. Compact and bushy

LITTLE JEWEL SD Shiny dark carmine/light purple. Medium flowers. Star shaped. Very strong growth. Soo Yun 1975

LIVERBIRD S Flesh pink/claret rose. Small flowers. Thornley 1966

LOEKY S Rhodonite red/dark mallow purple. Medium sized flowers. Saucer shaped. Medium upright growth.

LORD BYRON S Rich scarlet/very dark purple. Medium flowers. Medium upright. Lemoine

LORD ROBERTS S Scarlet/rich purplish violet. Upright and bushy. Lemoine 1909

LORNA SWINBANK S White-pink/pale lilac. Strong upright.

LOUISIANA DBL White and pink/pink. Medium. Upright growth.

LOVE KNOT DBL Rose madder/amethyst violet. Square shaped flowers. Walker 1979

LOXHORE CHORALE S Triphylla type. Strong red/vivid red. Wright 1994

LUSTRE S Creamy white/salmon pink slightly tinted orange. Small flowers. Upright, bushy. Bull 1868

LYCIOIDES S Light crimson/light purple. Small flowers. Tall upright.

LYES EXCELSIOR S Waxy white/rich scarlet cerise. Medium. Upright and bushy. Lye 1887

LYES UNIQUE S Waxy white/salmon orange. Medium blooms. Very strong. Lye 1886

LYNNE MARSHALL S Pale pink/lavender blue. Medium flowers. Pale green foliage. Upright and bushy. Tabraham 1974

MABEL GREAVES SD White/white veined pink. Medium blooms. Strong upright. Good for standards. Clark 1982

MAGENTA FLUSH DBL Spinel red/magenta rose flushed rose red. Gadsby 1970

MAJOR HEAPHY S Brick red/reddish scarlet. Small flowers. Upright and bushy.

MALIBU MIST DBL White/blue violet streaked light pink. Stubbs 1985

MARbled SKY S Pinkish white self. Upright growth.

MARCUS GRAHAM DBL Dusty pink/dusty pink streaked orange. Large flowers. Upright growth. Stubbs 1985

MARGARET KENDRICK SD Red/white. Large flowers. Strong upright.

MARGARET PILKINGTON S Waxy white/bishops violet. Clark 1984

MARIN GLOW S Pure waxy white/imperial rich purple. Strong upright bush. Reedstrom 1954

MARLENE GILBEE DBL Neyron rose/bishops violet edged spectrum violet. Large bell shaped blooms. Lax upright. Richardson 1985

MARY LOCKYER DBL Red/pale lilac marbled red. Large blooms. Growth strong upright. Colville 1967

MARY THORNE S Turkey red/violet with scarlet base. Thorne 1954

MAX JAFFA S Orient pink/mandarin red. Dark foliage. Lax upright. Good for standards. Burns 1985

MELODY S Pale rose pink/pale cyclamen purple. Medium upright. Good for standards. Reiter 1942

MELTING MOMENTS DBL Pale pink/white with pink blotches. Medium flowers. Brough.

MICKEY GOULT S White/mallow purple with slight veining. Small flowers. Upright and bushy. Needs shade. Roe 1981

MIDAS S Neyron rose/violet shaded rose. Yellowish foliage. Lax growth. Good standard. Sinton 1988

MIDNIGHT SUN DBL Pink/dark burgundy purple. Large blooms. Tall growth. Waltz 1960

MIDWINTER S White self. Medium flowers. Best in shade. Fleming

MINI SKIRT DBL White/smokey mauve grey. Filtered sun. Stubbs 1981

MINIROSE S Beige flushed rose/dark cyclamen purple. Very small and dainty. De Graaff 1985

MINNESOTA SD Ivory rose/rose. Medium. Mid green foliage. Upright.

MISS CALIFORNIA SD Medium pink/white with faintest pink glow. Lax bush. Hodges 1950

MISS GREAT BRITAIN S Creamy white/wisteria blue. Large flowers. Upright. Gadsby 1968

MISSION BELLS S Scarlet/rich purple splashed cerise. Bell shaped flowers. Upright growth. Walker and Jones 1948

MISTOQUE S White/Lilac blue. Similar to Carmel Blue. 1978

MISTY BLUE DBL Pink to white/misty lilac blue. Upright. Dyos 1982

MOLESWORTH DBL Bright cerise/creamy white veined cerise. Medium . Lax . Lemoine 1903

MONSIEUR THIBAUD S Cerise red/magenta paler at base. Large . Upright. Lemoine 1898

MONTROSE VILLAGE DBL White/spectrum violet and white. Good for standards. Richardson

MOONBEAM DBL Pale pink/white with pale pink splashes. Large. Medium upright. Hall 1982

MOONRAKER DBL Off white/pale blue. Strong, upright and bushy. Clitheroe 1979

MOONSHOT SD Roseine purple/bishops violet. Medium. Upright and bushy. Pacey 1984

MORE APPLAUSE DBL Ivory flushed pink/pink streaked rose. Very large. Medium green foliage. Lax upright. Plows 1986

MORNING CLOUD DBL White/White Large flowers. Medium green foliage Upright

MORNING GLOW SD Neyron rose/Pale wisteria blue. Medium. Upright and Bushy. Gadsby 1975

MORNING LIGHT DBL White/Lavender splashed pale pink. Large lax bush. Waltz 1960

MOTHERS DAY DBL Creamy white/creamy white. Large. Dark green leaves. Richardson 1988

MOUNTAIN MIST DBL White /pale silver grey mauve. Large flowers. Crocket 1971

MRS LOVELL SWISHER S Pinkish white/deep old rose. Small. Evans & Reeves 1942

MRS MARSHALL S Waxy creamy white/rosy cerise. Medium. Bushy. Good Standard. Jones 1862

MURIEL SD Scarlet/light purple. Large. Raiser unknown.

MY FAIR LADY DBL Strawberry red/lavender ageing to rosy purple. Large blooms. Upright.
Colville 1966

NANCY LOU DBL Deep clear pink/brilliant white. Large blooms. Upright. Stubbs 1971

NANNY ED DBL Red/purple. Large flowers. Upright.

NATASHA SINTON DBL Orchid pink/orchid pink veined magenta. Lax. Sinton 1990.

NAUTILUS DBL Cerise/white veined carmine. Large. Bushy. Lemoine 1901

NELL GWYNN S Orange salmon/bright orange edged vermilion. Handley 1976

NELLIE NUTTALL S Deep crimson/white with red veining. Small. Upright. Roe 1977

NEW FASCINATION DBL Bright red/rose pink flushed red. Large. Upright. Niederholzer 1940

NICE N EASY DBL Crimson/white veined carmine. Medium. Upright. Sinton 1988

NORTHILDE S Rose/geranium pink. Medium upright. Dijkstra 1991

NORTHUMBRIAN BELLE S Bright neyron rose/aster blue. Medium. Upright and self branching.
Ryle-Atkinson 1973

NORTHWAY S Light pink/cherry red. Small. Similar to Lustre in shape. Lax upright. Golics 1976

OLD ROSE DBL Neyron rose/neyron rose. Medium. Best in shade. Tall, upright. Pugh 1976

OPALESCENT DBL China rose/pale violet blended with opal and rose. Large blooms. Upright.
Fuchsia La 1951

OTHER FELLOW S Waxy white/coral pink. Small. Upright and bushy. Hazard and Hazard 1946

OUR BRENDA S Triphylla type. Candy pink self. Lax bush. Willment 1997

OUR DARLING S Deep rose/deep violet blue veined rose pink. Medium. Olive foliage.
Upright and bushy. Hall 1984

PACIFIC QUEEN DBL Phlox pink/old rose. Upright. Waltz 1963

PACQUESA S Deep red/pure white veined red. Large. Upright and bushy. Clyne 1974

PALE FLAME DBL Pale carmine rose/claret rose. Large blooms. Best colour in shade. Stubbs 1978

PAPA BLEUSS DBL Pale rose/bishops violet slightly marbled. Tired 1956

PARAMOUR S Light scarlet/red purple. Small. Upright.

PARTY FROCK S-SD Rosy pink/pastel blue splashed pink. Large. Upright. Walker and Jones.

PASADENA DBL Deep rose/snowy white. Large. Upright. Evans and Reeves 1938

PATIO PRINCESS DBL Neyron rose/white veined rose. Upright. Sinton 1988

PATRICIA S Waxy pale salmon/rosy cerise. Small flowers. Wood 1940

PATTI SUE DBL Orange pink/orange pink. Large flowers. Upright growth.

PEACHY DBL Peachy pink/white to flesh pink. Large flowers. Lax growth.

PENNINE S White/dark violet blue. Medium. Upright. Mitchinson 1979

PENNSYLVANIA DBL Red/deep purple. Very large flowers. Strong upright.

PEPPERMINT STICK DBL Carmine/rich royal purple, light carmine rose. Upright and bushy.
Walker and Jones 1950

PEPPERMINT CANDY DBL Pink/dark rose streaked pink. Garrett 1989

PERKY PINK DBL Pink/white pale pink flush and veins. Medium. Upright. Erickson-Lewis 1959

PERRY PARK S Pale pink/bright rose. Medium flowers. upright. Handley 1977

PERSONALITY DBL Bright rose red/magnolia purple. Large. Upright. Fuchsia La 1967

PETER BIELBY DBL Neyron rose/tyrian purple. Upright. Bielby 1987

PETER PAN S Pink/orchid and lilac. Heat tolerant. Tall. Erikson 1960

PHENOMENAL DBL Scarlet/rich indigo blue paler at base. Large. Bushy. Lemoine 1869

PIET V. VERGEER S Pale green/deep glowing pink. Medium flowers. Upright growth.

PINK BALLET GIRL DBL Scarlet red/pink flushed light blue. Large.

PINK BON ACCORD S Pale pink/deep pink touch of rose. Small. Upright and bushy. Thorne 1959

PINK DARLING S Pale pink/soft lilac pink. Upright and bushy. Frequent pinching. Machado 1961

PINK FAIRY DBL Palest rose/clear pink. Large. Upright and bushy. Waltz 1954

PINK FANTASIA S White/dark purple veined pink, picotee petal edges. Upright. Webb 1989

PINK PANTHER DBL Neyron rose/neyron rose. Medium. Bell shaped. Lax upright. Bielby 1985

PINK PEARL SD Pale pink/deeper shade of pink flushed rose. Medium. Upright bushy. Bright 1919

PINK QUARTET SD Deep pink/very pale pink. Large. Upright and bushy. Walker and Jones 1949

PINK SPANGLES S-SD Deep dull red/pink and veined red. Upright. SYN MIEKE MEURSING

PINK SURPRISE DBL Red/shell pink. Large flowers. Upright growth.

PINK TEMPTATION S Creamy white/tyrian rose with pale pink centre. Lax upright. Wills 1966

PINTO DBL Claret rose/white splashed claret rose. Huge blooms. Walker and Jones 1956

POPPET S Waxy carmine/roseine purple veined crimson. Bush or standard.. Holmes 1983

PORT ARTHUR SD Red/purple. Story 1869

PRES. LEO BOULLEMIER S White/magenta blue. Bell shaped. Upright and bushy. Burns 1983

PRES. GEORGE BARTLETT SD Cardinal red/violet purple. Strong upright growth. 1997

PRIDE OF THE WEST S Palish red/plum red. Large and free. Lye 1871

PRINCE SYRAY S Dawn pink/vermillion. Medium upright. White 1975

PSTICK GSPORT DBL Red/purple streaked pink. Yellowish leaves.

PURPERKLOKJE S Reddish aubergine/very dark aubergine. De Graaff 1989

PURPLE HEART DBL Pale crimson/rich violet. Large. Upright, bushy. Walker and Jones 1950

PURPLE PATCH S Deep red/deep purple. Medium flowers. Strong upright.

PURPLE RAIN S Dark reddish purple/very dark purple. Lax upright. Filtered light. De Graaff 1988

PURPLE SHOWERS S White/purple. Medium. Upright and bushy. Wright 1979

QUEEN MARY S Pink/rose to mauvish purple. Upright and bushy. Howlett 1911

QUEEN OF DERBY DBL Carmine rose/pale violet with pink stripes/flushes. Upright. Gadsby 1975

QUEEN OF HEARTS S Red/deep mauve flushed pink. Medium. Upright and bushy. Tabraham

QUEEN VICTORIA DBL Pale pink/purple carmine. Large. Smith 1843

QUEENS PARK DBL Rich waxy red/parma violet. Thorne 1959

RACHEL SINTON DBL Rose pink/white and pink. Medium flowers. Lax upright. Sinton.

RAMBO DBL Pale rose/rose lilac. Medium. Upright. Franck 1989

RAMS ROYAL DBL White/violet blue splashed pink. Medium upright. Redfern 1988

RASPBERRY DBL Pinkish white/raspberry rose. Large. Tirt 1959

RATATOUILLE DBL Pale lavender/purple with white stripes. De Graaff 1989

REBECCA WILLIAMSON DBL Pink/pink striped peach. Bell shaped flowers. Redfern 1986

RED SHADOWS DBL Bright crimson/deep burgundy purple. Large lax bush Waltz 1962

REQUIEM S Red/White. Medium. Upright and sturdy. Blackwell

REV DR BROWN DBL Pale pink/pure white with pink veins. Large. Upright. Taylor 1973

REVIVAL DBL Red/purple maturing to reddish purple. Small. Filtered light. De Graaf 1988

RIANT DBL Pale primula/violet and orchid pink. Moerman 1991

RIDESTAR DBL Bright red/deep blue fading to rosy lavender. Large free flowers.
Good for standards. Blackwell 1965

RIGOLETTO DBL Deep red/light purple. Large. Upright. Blackwell 1967

RIKSTE S Pink/pale pink. Medium flowers. Upright. Bogemann 1982

ROBBIE S Pale magenta/white. Medium. Upright. Lamb 1984

ROBERT LUTTERS S Rose/bengal red. Upright. Good for standards. Beije 1989

ROLLA DBL Pale pink/creamy white. Medium to large. Upright and bushy. Lemoine 1913

ROMAN CITY DBL Deep pink/plum purple with splashes of pink. Large. Endicott 1976

RON HOLMES S Pale pink/mandarin red. Medium. Upright. Holmes 1978

ROSE CHURCHILL DBL Rose/rose. Medium. Upright growth

ROSE MARIE DBL Pink/lighter pink. Very large flowers. Lax. Colville 1976

ROSE REVERIE DBL Neyron rose/solferine purple. Large. Upright. Crockett 1969

ROSY FRILLS DBL Pale pink/rose edged red. Large. Lax growth. Handley 1979

ROYAL AND ANCIENT S Pink/pink. Bell shaped flowers. Good standards. Goulding 1986

ROYAL TOUCH DBL Rosy pink/royal purple. Large. Tired 1964

ROYAL VELVET DBL Crimson red/deep purple, crimson splashes. Very large. Upright.
Semi shade. Waltz 1962

ROYAL WEDDING S White/ivory white. Medium. Bell shaped. Best in shade. Dunnett 1982

RUTH BRAZEWELL SD Palest pink/pale pink. Lace edges. Day 1989

RUTH KING DBL Pink/lilac and white. Large blooms. Tired 1967

SAN DIEGO DBL Pinkish white/rosy red. Large. Lax growth. Tired 1964

SAN FRANCISCO S Carmine rose/geranium lake. Reiter 1941

SANTA LUCIA DBL Deep red/orchid pink. Large. Upright. Munkner 1956

SAPPHIRE DBL White flushed pink/deep purplish blue. Medium. Upright and bushy. Waltz 1954

SARA HELEN DBL White/tyrian purple. Upright. Colville 1969

SARA LOUISE S Rose/Violet. Saucer shaped blooms. Upright. Crawshaw 1988

SARAH JANE DBL Rosy pink/lilac flushed deeper lilac. Small. Upright and bushy. Putley 1974

SARONG DBL White/violet purple. Free flowering. Kennett 1963

SCHNABEL SD Salmon orange/orange. Large. Lax growth. Antonelli 1971

SCHNEEWITCHEN S Deep pink/purplish pink. Small free flowering. Upright and bushy.

SEAFORTH S Cream/lilac pink. Large. Upright and bushy. Need 1964

SEVERN QUEEN S Very pale pink/rose bengal. Medium. Tall upright. Tolley 1978

SHADY LADY DBL Pink/white. Large blooms. Upright. Stubbs 1970

SHARON ALLSOP DBL Carmine/white. Upright and bushy. Pacey 1983

SHELL PINK S Pink/pale blue changing to shell pink. Upright and bushy. Tabraham 1975

SHELLFORD S Baby pink/white, slight veinign. Medium. Dark foliage. Upright. Roe 1986

SILVER KNIGHT S White/purple pale at base. Medium. Lax upright.

SILVER PINK S Deep pink/silver pink. Upright and bushy. Tabraham 1978

SIOBHAN SD White/white. Upright and bushy. Ryle 1976

SIREN DBL White/light lavender blue. Large blooms. Kennett 1973

SNOWFIRE DBL White/bright pink to coral. Medium. Best in shade. Good for standards. Stubbs

SO BIG DBL Pale pink/creamy white. Very large flowers. Waltz 1955

SOFTWARE DBL White/orchid maturing to paler orchid. Best in bright light. Klein 1987

SOMBRERO DBL Light pink/brilliant rose. Nelson 1957

SOUTHGATE DBL Medium pink/soft powder pink. Large. Bush/standard. Walter & Jones 1951

SOUTHSEAS SD-DBL Pale pink to white/pink. Medium flowers. Lax bush. Castro 1963

SOUTHWELL MINSTER S Rhodonite red/bishops violet. Small free flowers. Upright. Roe 1979

SPARKY S Triphylla type. Very dark blood red. Bushy growth. Webb 1994

SPION KOP DBL Rose red/white veined rose red. Medium. Jones 1973

SPOTLIGHT S Pink/white. Large flowers. 1970's

SQUARE PEG DBL Red/deep violet blue. Large blooms. Upright and bushy. Clyne 1972

STARDUST S Salmon pink/orange blending to crimson edges. Small. Upright. Handley 1973

STEELEY DBL White/deep violet maturing to neyron rose. Lax . Large. Richardson 1985

STONEY CREEK DBL Light pale pink/light pale pink. Compact upright.

STRAWBERRY SUNDAE DBL White/pink, touch of lilac. Large. Lax growth. Kennett 1958

STRING OF PEARLS S-SD Pale china rose/pale rose purple veined lavender. Medium. Upright.
Pacey 1976

SUGAR ALMOND DBL Creamy white/pale pink flushed rose pink. Medium. Upright and bushy.
Hobson 1978

SUNKISSED DBL Azalea pink/jasper red. Tirt 1957

SUNNY S Pale coral/red, burnt edges. Lax bush. Fuchsia Forest 1968

SUNSET S Pale pink/glowing coral. Medium flowers. Bell shaped. Upright. Niederholzer 1938

SUPERNOVA S Deep pink/white veined mid pink. Upright and bushy. Clitheroe 1984

SUPERSTAR S Phlox pink/rose purple edged deeper purple. Medium. Upright. Good for standards.
Sinton 1988

SURPRISE S Bright red/pale hyacinth blue. Tall and upright. Niederholzer 1938

SUSAN DBL Pale rose/light blue. Medium flowers. Upright and bushy. Niederholzer 1948

SUSAN FORD DBL Neyron rose/imperial purple. Medium. Upright and bushy. Clyne 1972

SVIKERBOSSIE S Empire rose/purple. Small. Upright and bushy. Brouwer 1985

SWANLEY BEAUTY S White/soft pink. Upright and bushy. Lye 1875

SWEET LEILANI DBL Pale rosy pink/smokey blue. Large flowers. Lax upright. Tirt 1957

SYMPHONY S Pale phlox pink/cobalt violet. Tall and bushy. Niederholzer.

TADDLE S Deep rose pink/waxy white. Medium. Upright and bushy. Gubler 1974

TAM O SHANTER DBL Flesh pink/dark purple streaked with pink. Upright and bushy.
Good for standards. Mitchinson 1984

TAMAR ISOBEL S Pale pink/reddish purple. Medium Upright and bushy. Mitchinson 1988

TAMWORTH S Pure white/rich purple and salmon pink. Medium. Best in shade.
Upright and bushy. Handley 1976

TASK FORCE S White/cyclamen purple matures to magenta. Large. Upright. Redfern 1984

TELEVISION DBL White/deep orchid splashed fuchsia pink. Walker and Jones 1950

THE DOCTOR S Flesh pink/rosy salmon. Medium to large flowers. Castle Nurseries

THE SPEEDBIRD DBL Pure white/deep blue. Large blooms. Upright and bushy. Rawlins 1967

THINK PINK S Dark rose/rose. Bushy growth. Plows 1989

THOMPSONII S Scarlet/purple. Small flowers. Upright and tall. Thompson 1840

THREE CHEERS S Bright red/blue with white markings. Large flowers. Upright. Creer 1968

TILLMOUTH LASS S Rhodamine pink/lavender fading to purple. Medium. Upright. Ryle 1975

TINEKE S Pale rose/rosy purple. Upright. Breemer 1990

TOLLING BELL S Scarlet/pure white veined cerise. Large. Bell shaped. Upright. Turner 1964

TOM KNIGHTS S White/lavender to purple. Medium. Tall upright. Goulding 1983

TOM REDFERN DBL White/violet blue maturing to violet. Medium. Redfern 1987

TOPPER SD Red/dark blue. Upright and bushy. Brown and Soules 1952

TORCH DBL shiny pink/purplish red and orange salmon. Medium. Tall upright. Munkner 1963

TORVILL AND DEAN DBL Pale cerise/pure white veined and flushed cerise. Large. Upright. Pacey 1985

TOUR EIFFEL S Carmine/light lilac purple with pink base. Small. Prefers full sun. Bonsai. De Graaff 1985

TOURTONNE S Light crimson/light crimson. Large. Needs warmth. F van Suchtelen 1968

TOWI DBL Red/violet pink streaked and marbled. Large. Lax upright.

TREASURE DBL Neyron rose/pale silvery violet pink. Large. Bushy.

TREWINCE TWILIGHT S Waxy white/pinkish mauve fading to pink. Upright. Jackson 1972

TWINKLING STARS S Blush pink/fuchsia pink. Small. Upright. Handley 1976

ULLSWATER DBL Pale pink/orchid blue fading to orchid purple. Large. Upright. Travis 1958

ULTRAMAR DBL White/pastel grey blue. Upright and vigorous. Reiter 1956

UPWARD LOOK S Carmine/pale roseine purple. Prefers shade. Flowers held erect. Gadsby 1968

VALERIE COTTRELL S Scarlet/white veined red. Citrus foliage. Medium upright. Porter 1985

VINCENT VAN GOGH S An all pink variety. medium green foliage. Upright growth

VIOLET BASSETT BURR DBL White/pale lilac. Dark green foliage. Upright. Holmes 1972

VIOLETTA S Ivory white/bishops violet. Long bell shaped flowers. Upright. Schnabel 1952

VOODOO DBL Dark red/deep purple violet. Very large flowers. Upright. Tired 1953

W.F.C. KAMPIONEN S White/violet. Medium blooms. Upright. Krom 1989

WALSINGHAM SD Palest pink/pale lavender lilac. Clitheroe 1979

WALTZING MATHILDA DBL Light pink/pink veined rose. Light foliage. Upright. Bromat 1988

WALZ DOEDELZAK S Rosy red/rosy pink. Unusual flower shape. Upright. Waldenmaier 1989

WALZ FLEUR S Orange/orange. Medium sized flowers. Dark foliage. 1988

WALZ JUBELTEEN S Pale pink/pinkish orange. Upright. Waldenmaier 1990

WALZ LUCIFER S Light rose pink/deep red. Small. Upright. Waldenmaier 1991

WALZ TRIANGL DBL Reddish orange/dark orange. Medium. Lax growth. Waldenmaier 1988

WALZ TUBA S Crimson/tyrian purple. Upright. Waldenmaier 1987

WAR PAINT DBL White/dianthus purple with coral markings. Large. Upright. Kennett 1960

WATER NYMPH S White/crimson. Upright. Story 1859

WAVENEY GEM S White/pink with mauve flush. Medium. Lax upright. Burns 1985

WAVENEY WALTZ S Baby pink/white. Light green foliage. Burns 1982

WEDDING BELLS DBL White/white. Small. Yellowish foliage.

WELSH DRAGON DBL Rose opal/magenta rose. Large. Upright. Baker 1970

WICKED QUEEN DBL Dark red/deep purple splashed pink. Very large. Upright and bushy. Tabraham 1985

WILSON'S JOY S White/cerise blue shading to cerise. Medium. Growth upright. Wilson 1974

WINGROVES MAMMOTH DBL Turkey red/white veined carmine.

WINIFRED S Deep rose pink/cerise pink paler at base. Medium. Upright. Chatfield 1973

WINSTON CHURCHILL DBL Pink/lavender blue maturing to pale purple. Medium. 1942

WOODNOOK DBL White/pale violet purple. Upright. Pacey 1987

YANKEE CLIPPER DBL Carmine/ruby red and carmine. Soo Yun

YULETIDE DBL Rich crimson/creamy white veined crimson. Tired 1948

ZARA S Light rose/flame orange. Small flowers. Upright. Bushy. Porter 1981

ZWAARTE SNOR DBL Deep carmine red/dark purple. Lax. Upright. Weeda 1990

Lechlade Varieties

Lechlade Fuchsia centre was a well known grower of quality fuchsias. unfortunately it no longer exists but we are pleased to stock the following varieties.

Lechlade Apache 1984 Recurving red flowers.

Lechlade Bullet 1984 Very deep red self. Bullet shaped flowers.

Lechlade Maiden 1985 Pink/pale peach pink.Soft colours.

Lechlade Marchioness 1985 Pale green tipped sepals/pale orange.

Lechlade Potentate

Lechlade Rocket 1984 Orange red/orange red. Lax growth.

Lechlade Tinkerbelle Single flower. Light pink/pale lilac upright.

Lechlade Violet 1984 Pale violet/blackish purple.

Please also see our main list.

Notes

TERMS OF BUSINESS

PAYMENT

Strictly payment with order. Cheques and Postal Orders should be made payable to 'BRYNAWEL GARDEN CENTRE ' and sent to the address on the order form.

No receipt will be sent unless specifically requested.

Our V.A.T. No. is 329 1050 82

DELIVERY

Minimum quantity is 10 plants. (With the exception of collections) All orders will be dealt with in strict rotation.

DAMAGE OR DELAY

We cannot accept responsibility for losses due to delays or damage in the post.

Claims for the above should be made to your Local Post Office.

We always obtain proof of posting from our Post Office and this is available from us to help with your

CANCELLATION

You may cancel your order at any time (in writing).

QUERIES

If you have any general queries then please call 029 2070 2660 during our business hours (9am-5.30pm 10am-4pm Sunday). As it is difficult to give information on individual orders over the telephone it is advisable to leave your name and address and allow us to call you back with the answer to your query. We will notify you if there is any problem with your order.

NAMING

Every effort is made to ensure the correct naming of our plants.

ALL CUTTINGS LEAVE OUR NURSERY IN EXCELLENT CONDITION AND SHOULD PRODUCE PLANTS OF THE HIGHEST QUALITY. HOWEVER, IF ANY DO FAIL WITHIN 3 DAYS OF DELIVERY, THEN PLEASE RETURN AND WE WILL REPLACE AS SOON AS POSSIBLE.

Please read the above carefully.

PLACING AN ORDER WITH US CONSTITUTES ACCEPTANCE OF THE ABOVE.

**DETAILS OF PRICES, DELIVERY E.T.C. CAN BE FOUND ON THE ORDER FORM
ENCLOSED**